

# 2-2 Hole Corner Angle Bracket



## FEATURES

Used to create metal frames with nVent CADDY Eristrut channels

## SPECIFICATIONS

Table 1/2

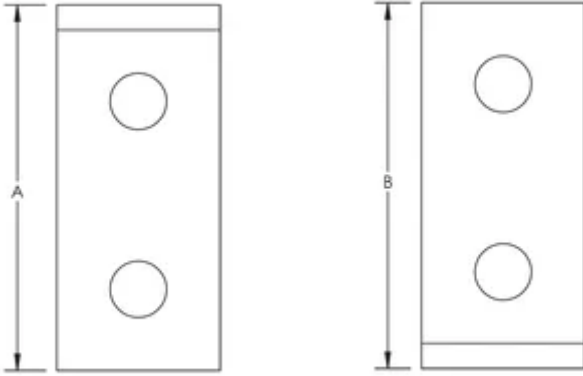
Catalog Number	Article Number	Material	Finish	Hole Size (HS)	Thickness (T)	A
ZWA205S6	388761	Stainless Steel 316 (EN 1.4401)		14 mm	6 mm	102 mm
ZW205	313380	Steel	Hot-Dip Galvanized	14 mm	6 mm	102 mm
ZWA205EG	387652	Steel	Electrogalvanized	14 mm	6 mm	100 mm
ZWA205	387650	Steel	Hot-Dip Galvanized	14 mm	6 mm	102 mm

Table 2/2

Catalog Number	Article Number	B	Screw Included	Screw Diameter (Sc)	Screw Length (L)
ZWA205S6	388761	86 mm	No		
ZW205	313380	86 mm	Yes	10 mm	25mm
ZWA205EG	387652	95 mm	No		
ZWA205	387650	86 mm	No		

## DIAGRAMS

---



## WARNING

---

nVent products shall be installed and used only as indicated in nVent's product instruction sheets and training materials. Instruction sheets are available at [www.nvent.com](http://www.nvent.com) and from your nVent customer service representative. Improper installation, misuse, misapplication or other failure to completely follow nVent's instructions and warnings may cause product malfunction, property damage, serious bodily injury and death and/or void your warranty.

### North America

+1.800.753.9221

Option 1 – Customer Care

Option 2 – Technical

Support

### Europe

Netherlands:

+31 800-0200135

France:

+33 800 901 793

### Europe

Germany:

800 1890272

Other Countries:

+31 13 5835404

### APAC

Shanghai:

+ 86 21 2412 1618/19

Sydney:

+61 2 9751 8500



Our powerful portfolio of brands:

**CADDY**

**ERICO**

**HOFFMAN**

**ILSCO**

**SCHROFF**

**TRACHTE**

