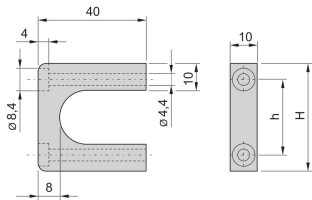


MultipacPRO Front Handle, One-Piece, Width 10 mm



The front handles can be mounted and provide an easier to mount assembly. The handles can be assembled from the front side.

CERTIFICATIONS



FEATURES

Load-carrying capacity 30 kg/pair

Assembly on the front panel

Can be used for the aluminium or sheet metal versions

SPECIFICATIONS

Material:	Aluminum
Finish:	Anodized
Works With:	Chassis; Front Panels
Product Family:	MultipacPRO; Frame Type Plug-In Unit
Product Type:	Handle

Table 1/1

Catalog Number	Rack Height	Package Quantity	Handle Type	Color	Width
20860-256	1U	2	Straight	Silver	10mm
20860-257	2U	2	Straight	Silver	10mm
20860-259	4U	2	Straight	Silver	10mm
20860-258	3U	2	Straight	Silver	10mm

Catalog Number	Rack Height	Package Quantity	Handle Type	Color	Width
20860-260	5U	2	Straight	Silver	10mm

WARNING

nVent products shall be installed and used only as indicated in nVent's product instruction sheets and training materials. Instruction sheets are available at www.nvent.com and from your nVent customer service representative. Improper installation, misuse, misapplication or other failure to completely follow nVent's instructions and warnings may cause product malfunction, property damage, serious bodily injury and death and/or void your warranty.

North America

All locations
+1.763.422.2661
Chat with us:
nvent.com/schroff

Europe

Straubenhardt, Germany
+49.7082.794.0
Betschdorf, France
+33.3.88.90.64.90
Warsaw, Poland
+48.22.209.98.35
Assago, Italy
+39.02.932.7141
Chat with us:
nvent.com/schroff

Asia

Shanghai, China
+86.21.2412.6943
Qingdao, China
+86.532.8771.6101
Singapore
+65.6768.5800
Shin-Yokohama, Japan
+81.45.476.0271
Chat with us:
nvent.com/schroff

Middle East & India

Dubai, United Arab Emirates
+971.4.378.1700
Bangalore, India
+91.80.6715.2001
Istanbul, Turkey
+90.216.250.7374
Chat with us:
nvent.com/schroff



Our powerful portfolio of brands:

CADDY ERICO HOFFMAN ILSCO SCHROFF TRACHTE