

Flush-Mount Door Frames for Pull Box



Flush-Mount Door Frames are used in Screw-Cover Pull Boxes for telephone cabinet installations, in communication wiring and signal systems, or as a junction or pull box and switch enclosure.

FEATURES

Continuous hinge on door

Rugged black composite slide latch

Optional tamper-resistant lock kit includes cylinder lock, tamper-resistant screws and special driver bit

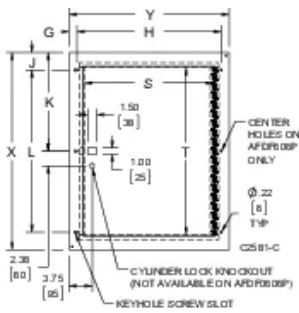
SPECIFICATIONS

| | |
|--------------------|---------------|
| Color Code: | ANSI 61 |
| Color: | Gray |
| Material: | Mild Steel |
| Finish: | Powder Coated |

Table 1/1

| Catalog Number | Article Number | Height (H) | Width (W) | Thickness (T) | Door Size (T) | Door Size (S) |
|----------------|----------------|------------|-----------|---------------|---------------|---------------|
| AFDF1818P | 42950 | 508mm | 508mm | 1.9mm | 381mm | 381mm |
| AFDF1812P | 42940 | 508mm | 356mm | 1.9mm | 381mm | 229mm |
| AFDF2418P | 42960 | 660mm | 508mm | 1.9mm | 533mm | 381mm |
| AFDF3024P | 42980 | 813mm | 660mm | 1.9mm | 686mm | 533mm |
| AFDF1212P | 42930 | 356mm | 356mm | 1.9mm | 229mm | 229mm |
| AFDF2424P | 42970 | 660mm | 660mm | 1.9mm | 533mm | 533mm |
| AFDF0606P | 43630 | 203mm | 203mm | 1.9mm | 76mm | 76mm |

DIAGRAMS



WARNING

nVent products shall be installed and used only as indicated in nVent's product instruction sheets and training materials. Instruction sheets are available at www.nvent.com and from your nVent customer service representative. Improper installation, misuse, misapplication or other failure to completely follow nVent's instructions and warnings may cause product malfunction, property damage, serious bodily injury and death and/or void your warranty.



Our powerful portfolio of brands:

CADDY ERICO HOFFMAN ILSCO SCHROFF TRACHTE