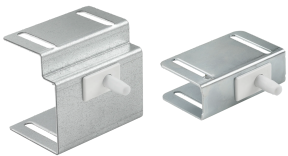


# Remote Door Switch

The Remote Door Switch can activate a light or other electrical component when the enclosure door is opened.



## INDUSTRY STANDARDS

---

UL508A Recognized, Type 3R, 4, 4X, 12; File E61997

cUL Recognized per CSA C22.2 No. 14-13; Type 3R, 4, 4X, 12; File E61997

## FEATURES

---

Mounts on enclosure frame and includes mounting hardware

Mounting plate is 14 gauge

## SPECIFICATIONS

Table 1/1

Catalog Number	Article Number	Height	Width	Depth	Material	Finish
ALFSWD	71260	32mm	17mm	22mm	Mild Steel	Galvanized
PLFSWD	26949	32mm	17mm	22mm	Mild Steel	Galvanized

## WARNING

nVent products shall be installed and used only as indicated in nVent's product instruction sheets and training materials. Instruction sheets are available at [www.nvent.com](http://www.nvent.com) and from your nVent customer service representative. Improper installation, misuse, misapplication or other failure to completely follow nVent's instructions and warnings may cause product malfunction, property damage, serious bodily injury and death and/or void your warranty.



Our powerful portfolio of brands:

**CADDY ERICO HOFFMAN ILSCO SCHROFF TRACHTE**