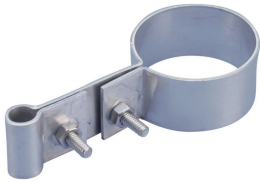


# Extended Strap Cable/Point to Pipe Support



## CERTIFICATIONS



## FEATURES

Offset support for air terminals or conductors

## SPECIFICATIONS

Table 1/2

Catalog Number	Material	Finish	Diameter (Ø)	Outer Diameter (OD)	Height (H)	A
LPA676	Aluminum		13.0 - 15.88 mm	60.3 - 73.03 mm	31.8 mm	63.5 mm
LPA675	Aluminum		13.0 - 15.88 mm	48.3 - 60.96 mm	31.8 mm	63.5 mm
LPA677	Aluminum		13.0 - 15.88 mm	88.9 - 101.6 mm	31.8 mm	63.5 mm
LPA678	Aluminum		13.0 - 15.88 mm	114.3 - 127 mm	31.8 mm	63.5 mm
LPC675	Copper	Tinned	13.0 - 15.88 mm	48.3 - 60.96 mm	31.8 mm	63.5 mm
LPC676	Copper	Tinned	13.0 - 15.88 mm	60.3 - 73.03 mm	31.8 mm	63.5 mm

Catalog Number	Material	Finish	Diameter (Ø)	Outer Diameter (OD)	Height (H)	A
LPC677	Copper	Tinned	13.0 - 15.88 mm	88.9 - 101.6 mm	31.8 mm	63.5 mm
LPC678	Copper	Tinned	13.0 - 15.88 mm	114.3 - 127 mm	31.8 mm	63.5 mm

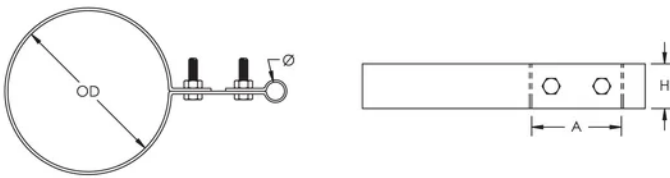
Table 2/2

Catalog Number	Unit Weight	Certifications
LPA676	0.07 kg	
LPA675	0.07 kg	
LPA677	0.1 kg	
LPA678	0.12 kg	
LPC675	0.17 kg	E202878-Combined_CoC, E202878-Combined_CoC
LPC676	0.17 kg	E202878-Combined_CoC, E202878-Combined_CoC
LPC677	0.24 kg	E202878-Combined_CoC, E202878-Combined_CoC
LPC678	0.28 kg	E202878-Combined_CoC, E202878-Combined_CoC

## ADDITIONAL PRODUCT DETAILS

Air terminals must be attached to a threaded base.

## DIAGRAMS



## WARNING

nVent products shall be installed and used only as indicated in nVent's product instruction sheets and training materials. Instruction sheets are available at [www.nvent.com](http://www.nvent.com) and from your nVent customer service representative. Improper installation, misuse, misapplication or other failure to completely follow nVent's instructions and warnings may cause product malfunction, property damage, serious bodily injury and death and/or void your warranty.



WARNING: This product can expose you to chemicals including lead, which is known to the State of California to cause cancer and birth defects or other reproductive harm. For more information go to [www.P65Warnings.ca.gov](http://www.P65Warnings.ca.gov).

**North America**

+1.800.753.9221

Option 1 – Customer Care

Option 2 – Technical

Support

**Europe**

Netherlands:

+31 800-0200135

France:

+33 800 901 793

**Europe**

Germany:

800 1890272

Other Countries:

+31 13 5835404

**APAC**

Shanghai:

+ 86 21 2412 1618/19

Sydney:

+61 2 9751 8500



Our powerful portfolio of brands:

**CADDY ERICO HOFFMAN ILSCO SCHROFF TRACHTE**