

IEEE Std 837™-2014

Frequently Asked Questions

1. WHAT IS THE SCOPE AND PURPOSE OF THE IEEE 837 STANDARD?

Per IEEE Std 837™-2014:

Scope

- This standard provides direction and methods for qualifying permanent connections used for substation grounding. It particularly addresses the connection used within the grid system, the connection used to join ground leads to the grid system, and the connection used to join the ground leads to equipment and structures.

Purpose

- The purpose of this standard is to give assurance to the user that a connection meeting the requirements of this standard will perform in a satisfactory manner over the lifetime of the installation, provided that the proper connection is selected for the application and that the connection is installed correctly. Grounding connections that meet the test criteria stated in this standard for a particular conductor size range and material should satisfy all of the criteria for connections as outlined in IEEE Std 80™ [B3].
- To test the connection for heat and mechanical forces during a possible maximum fault current situation in a substation, under the configuration defined by the standard.

2. WHAT ARE THE MAIN DIFFERENCES BETWEEN THE 2002 AND 2014 EDITIONS?

- There is now a distinction between conductor-to-conductor connections (used to join grounding leads to the ground grid) and terminal connections (used to connect leads to equipment and structures).
- **In the 2002 edition of the standard** the magnitude of the test current for 4/0 AWG was based on rms symmetrical value of fusing conductor current @ 1 sec, this is approx. 30.5 kA, the peak is $2.7 \times 30.5 = 82$ kA, this current level was applied for 0.2 seconds, which is approximately 20% fusing of the conductor.
- **In the 2014 edition of the standard** the magnitude of the symmetrical rms test current is set to 47 kA and peak of 127 kA, applied for 15 cycles (0.25 seconds), this is

approximately 90% fusing of the conductor. This results in a mechanical force which is 2.4 times greater for a 4/0 AWG copper conductor as compared to the 2002 edition tests.

- A new test configuration for the EMF current test. The same test loop for the sequential tests was used for the EMF test in the 2002 edition, and in the 2014 edition a test sample assembly is specified to be in the range of 48" – 72" in length. The testing can qualify only one connector at a time.
- The resistance pass/fail criteria for the EMF test has been removed from the 2014 edition because the majority members of the working group felt that the resistance measurement is not relevant in this test. Instead, the following pass/fail criteria was added. The allowable movement for the conductor out of the connection shall not exceed 10 mm or the diameter of the conductor (whichever is smaller). nVent ERICO Cadweld connection creates a metallic bond between the connection and the conductor during the exothermic welding process. A metallic bond by definition does not allow any conductor movement at all.
- The 2014 edition now specifically states that connectors "shall be tested for all materials for which they are intended to be qualified per the standard". This means that if a connector can be used on copper and copper-clad steel, then it must be tested with both conductor types. The IEEE Std 837™-2014 EMF current test now requires all test assemblies to be mounted in a horizontal plane and they shall not be restrained - this results in a more rigorous test.

3. WHY DID THE EMF TEST CHANGE?

- Due to load growth and resulting transmission and distribution system capacities, available substation fault currents have been increasing resulting in the need for testing at higher short-circuit current levels. In addition, these new more stringent testing current levels and waveforms are now in alignment with the ASTM F855 "Standard Specifications for Temporary Protective Grounds to Be Used on De-energized Electric Power Lines and Equipment".

4. WHAT ARE THE REQUIREMENTS FOR THE NEW EMF TEST ASSEMBLY?

- For conductor-to-conductor connections, used to join grounding leads to the ground grid (below grade simulation), the connector under test is located in the center. For terminal connections, used to connect leads to equipment and structures (above grade simulation), one test sample is connected directly to the high-current test bus. is 2.7 x = 82 kA, this current level was applied for 0.2 seconds, which is approximately 20% fusing of the conductor.

5. HOW MANY SAMPLES NEED TO BE TESTED?

- In order to be qualified for the IEEE Std 837™-2014, 4 samples must be tested and each test sample has to be tested with two surges. If one of these samples does not meet the passing criteria, the IEEE Std 837™-2014 allows for a retest with 4 new samples. If all of the second set of 4 passes, then the connector is qualified. If there is a failure in the second set, the connector design cannot be qualified.
- Testing summary: the test consists of two surges for each sample:
 - Surge #1
 - Conductor cooled to 100°C
 - Surge #2

6. ARE THERE SPECIFIC CONNECTION TYPES REQUIRED FOR THE IEEE STD 837™-2014 TESTS?

- See section 7 for more information, Figures 4a and 4b outlines as follows
 - Connections used within the grid system and connections used to join ground leads to the grid system
 - » Bus to bus connection: "X" or "T" connection
 - » Connection to ground rod
 - » Mechanical 90 degree (not applicable to Cadweld)
 - » Parallel Splice or Straight Splice

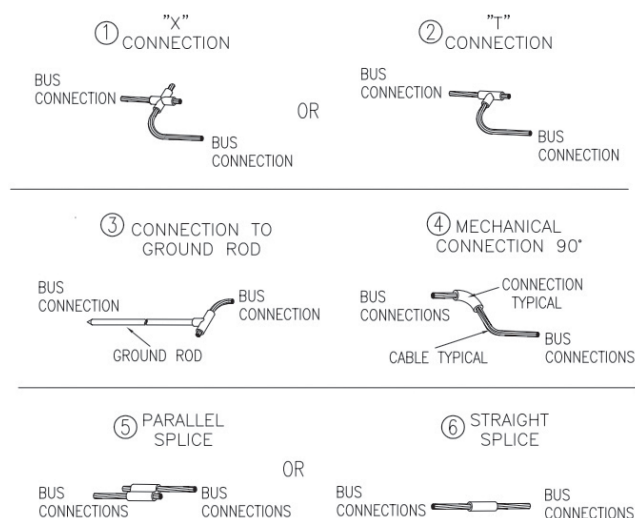


Figure from IEEE Std 837™-2014 Section 7.2.2

- Connections used to join the ground leads to equipment and structures
 - » Connection to lug
 - » Connection to steel plate
 - » Ground connection for one or two copper cables to bar (not applicable to Cadweld)

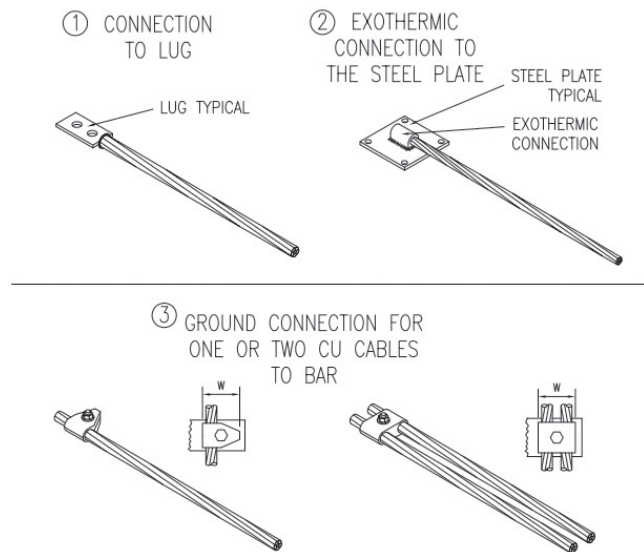


Figure from IEEE Std 837™-2014 Section 7.2.2

7. DOES THE STANDARD DESCRIBE HOW THE TERMINATIONS ARE MADE TO THE HIGH-CURRENT BUS?

- The standard does not specifically detail these connection requirements. For conductor-to-conductor connections (used to join grounding leads to ground system) the bus connections (where connector under test is located in the middle of the test assembly), the bus connections (dead ends) "must be electrically and mechanically robust to prevent movement during the test". For terminal connections (used to connect leads to equipment and structures), the test samples (lug or direct exothermic connection to steel) shall be connected to the rigid mounted plates and/or bus extensions. These mounting plates or bus extensions are secured directly to the high current bus. The method of connection of the other end of the test assembly again is not specified.

8. WHICH CONNECTIONS WERE TESTED?

- 4/0 copper cable
 - Parallel Splice or Straight Splice
 - » HDPTC2Q2Q
 - » PTC2Q2Q
 - » SSC2Q2Q
 - Ground rod
 - » GTC182Q
 - Bus to bus connection: "X" or "T" connection
 - » XBM2Q2Q (XB32Q2Q is the same design, but with a different mold frame)

- Connections used to join the ground leads to equipment and structures
 - » VSC2Q (Connection to steel plate)
 - » LAC2QEE (Connection to lug)
- 4/0 Equivalent Copper-clad Steel Conductor
 - Parallel Splice or Straight Splice
 - » PTC9G9G
 - Ground rod
 - » GTC189G
 - Bus to bus connection: "X" or "T" connection
 - » XBQ9G9G
 - » TAC9G9G
 - Connections used to join the ground leads to equipment and structures
 - » VSC9G (Connection to steel plate)
 - » LAC9GEE (Connection to lug)
- All samples were assembled by nVent ERICO using production material together with standard Cadweld molds. nVent ERICO used standard practices to assemble the samples, as outlined in nVent ERICO Instruction Prints that are included with the mold and welding material, and Installers and Inspectors Guide for Cadweld Electrical Connections.

9. WHAT WELDING MATERIAL WAS USED TO MAKE THE CONNECTIONS?

- The IEEE Std 837 – 2014 testing focusses on the connection. The test report is applicable for both traditional welding material and Cadweld Plus. The difference between traditional Cadweld welding material and Cadweld Plus in the ignition process. The resulting connection would be the same.

10. IS THE TEST REPORT FROM AN INDEPENDENT LAB?

- All tests were completed by Powertech, an independent lab. Accreditation is provided at the end of the document.

11. IS A COMPLETE TEST REPORT AVAILABLE?

- A summary report is available at this time. A full test report will be available in the near future.

12. ARE ANY OTHER CONNECTIONS QUALIFIED TO THE IEEE STD 837™-2014 EMF TEST OTHER THAN THE CONNECTIONS THAT WERE TESTED?

- **IEEE Std 837™-2014 Section 4:**
Within a family of connectors, more robust connectors need not be tested. For example, bolted pressure plate lugs using four (4) bolts need not be tested if two (2) bolts lugs have been tested successfully for the same size.

- After 4/0 AWG copper or 19/#8 copper clad steel connections have been qualified (at 90% of fusing test current for the EMF test), the smaller conductors (from #2 up to 4/0) in the same connector families can be qualified by only performing the resistance test outlined in section 5.3.2.1 of the standard. No additional tests are required for smaller sizes.

13. HOW DOES IEEE 837 APPLY TO MARKETS OUTSIDE OF UTILITIES?

- Cadweld connections are used in many markets including telecommunications, petrochemical, commercial and industrial structures to name a few. Most markets do not have specific connection test requirements. Substation grounding connections are designed to handle severe conditions unlikely to be seen in other markets. The IEEE Std 837™-2014 tests require the highest level of performance for qualification. nVent ERICO does not alter connection designs between markets. By meeting the test requirements in IEEE Std 837™-2014, design engineers and owners will have confidence in the reliability and performance of the grounding products they specify for other markets.

POWERTECH LAB ACCREDITATION

12388 - 88 Avenue

Surrey, British Columbia Canada V3W 7R7

Phone: 604-590-7500

<http://www.powertechlabs.com/>

ISO 9001:2008

Powertech's quality management system is registered to ISO 9001. The registration covers all aspects of Powertech's products and services.

http://www.powertechlabs.com/temp/20132447473/ISO_9001_certificate1.pdf

ISO/IEC 17025:2005

Powertech is an accredited laboratory in the Standards Council of Canada (SCC) Program for the Accreditation of Laboratories (PALCAN). A number of tests are accredited under this program.

http://palcan.scc.ca/specs/pdf/612_e.pdf



Our powerful portfolio of brands:

CADDY ERICO HOFFMAN ILSCO SCHROFF TRACHTE