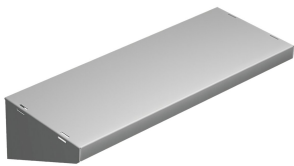


# D-Box Shelves

## Data Solutions

The D-Box Shelves provide additional storage in 36- and 48-inch (914- and 1219-mm) tall cabinets. Please note the load raint is 75 lb. (34.0 kg)



### FEATURES

The D-Box Shelves provide additional storage in 36- and 48-inch (914- and 1219-mm) tall cabinets

Please note the load raint is 75 lb. (34.0 kg)

### SPECIFICATIONS

Table 1/2

Catalog Number	Article Number	Material	Finish	Color	Color Code	Thickness
DBSHELF8	14534	Mild Steel	Powder Coated	Light Gray	RAL 7035	1.52mm
DBSHELF12	14535	Mild Steel	Powder Coated	Light Gray	RAL 7035	1.52mm

Table 2/2

Catalog Number	Article Number	Length	Depth
DBSHELF8	14534	484mm	184mm
DBSHELF12	14535		281mm

### WARNING

nVent products shall be installed and used only as indicated in nVent's product instruction sheets and training materials. Instruction sheets are available at [www.nvent.com](http://www.nvent.com) and from your nVent customer service representative. Improper installation, misuse, misapplication or other failure to completely follow nVent's instructions and warnings may cause product malfunction, property damage, serious bodily injury and death and/or void your warranty.



Our powerful portfolio of brands:

**CADDY   ERICO   HOFFMAN   ILSCO   SCHROFF   TRACHTE**