

# Lug to Rail

## Data Solutions



nVent ERICO Cadweld applications for railway properties utilize the nVent ERICO Cadweld Plus F80 and the nVent ERICO Cadweld F80 welding material alloys. nVent ERICO Cadweld exothermically welded connections are engineered to provide a permanent, molecular bond that will not loosen or corrode, enabling connection of dissimilar materials. The connections are designed to perform for the life of the conductor and/or installation. The nVent ERICO Cadweld connection has a current carrying capacity equal to or greater than that of the conductor and will withstand repeated fault currents without failing during operation. Once completed, installers can clearly ensure quality by visually inspecting the new connection.

### FEATURES

- Forms a permanent, low resistance connection
- Provides a molecular bond
- nVent ERICO Cadweld Exothermic Connections are rated with the same current capacity as the conductor
- Portable installation equipment with no external source of power required
- Installers can be easily trained to make nVent ERICO Cadweld Exothermic Connections
- Connections can be visually inspected

### SPECIFICATIONS

Table 1/1			
Catalog Number	Mold Family	Lug/Busbar Size	Rail Type
PB72QVJH84C	QV Mold Family	1/2" x 2"	84 lb Composite
PB72XLQVJH84CS	QV Mold Family	1/2" x 2"	84 lb Composite
PB80QVJHV	QV Mold Family	1/2" x 2"	150 lb Inverted Bethlehem
PB80QVJHVM	QV Mold Family	1/2" x 2"	150 lb Inverted Bethlehem
PBXL72QVJH150BS	QV Mold Family	1/2" x 2"	150 lb Bethlehem

## ADDITIONAL PRODUCT DETAILS

---

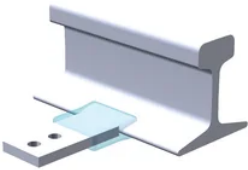
For applications such as computer room, tunnel or other low-ventilation areas, specify a smokeless nVent ERICO Cadweld Exolon mold. Add an XL prefix to the standard mold part number when ordering (for example, a PB10GR162G becomes XLPB10GR162G). Similarly, nVent ERICO Cadweld Exolon welding material is also designated by the XL prefix (for example, PB90 becomes XLPB90).

XXXX-XX-XX-XX-L-M-W		
XXXX	Price Key	
XX	Mold Family	
XX	Lug/Busbar Size	
XX	Rail Type	
L*	Split Crucible	Crucible section is split on molds designed with horizontal opening for easier cleaning
M*	Mold Only	
W*	Wear Plates	Reduce mechanical abrasion of molds at cable entry points

\* Empty if none

## DIAGRAMS

---



## WARNING

---

nVent products shall be installed and used only as indicated in nVent's product instruction sheets and training materials. Instruction sheets are available at [www.nvent.com](http://www.nvent.com) and from your nVent customer service representative. Improper installation, misuse, misapplication or other failure to completely follow nVent's instructions and warnings may cause product malfunction, property damage, serious bodily injury and death and/or void your warranty.



Our powerful portfolio of brands:

**CADDY ERICO HOFFMAN ILSCO SCHROFF TRACHTE**