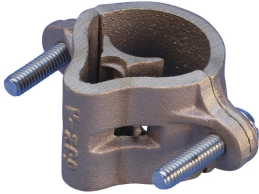


# Cable/Point Pipe Support



## CERTIFICATIONS



## FEATURES

Clamp for bonding horizontal or vertical pipes to the lightning protection system

May be used as a vertical support for air terminals

Listed to UL® 96

## SPECIFICATIONS

Table 1/2

Catalog Number	Material	Finish	Diameter (Ø)	Outer Diameter (OD)	Depth (D)	Width (W)
LPA331	Aluminum	Bare	9.53 mm	44.5 - 63.5 mm	41.27mm	99 mm
LPA330	Aluminum	Bare	9.53 mm	35.6 - 44.45 mm	41.27mm	88.9 mm
LPC330	Brass	Bare	9.53 mm	35.6 - 44.45 mm	41.27mm	88.9 mm
LPC330L	Brass	Tinned	9.53 mm	35.6 - 44.45 mm	41.27mm	88.9 mm
LPC331L	Brass	Tinned	9.53 mm	44.5 - 63.5 mm	41.27mm	99 mm

Table 2/2

Catalog Number	Unit Weight	Certifications
LPA331	0.16 kg	
LPA330	0.16 kg	E202878-Combined_CoC, E202878-Combined_CoC
LPC330	0.36 kg	
LPC330L	0.36 kg	E202878-Combined_CoC, E202878-Combined_CoC
LPC331L	0.38 kg	

## DIAGRAMS



## WARNING

nVent products shall be installed and used only as indicated in nVent's product instruction sheets and training materials. Instruction sheets are available at [www.nvent.com](http://www.nvent.com) and from your nVent customer service representative. Improper installation, misuse, misapplication or other failure to completely follow nVent's instructions and warnings may cause product malfunction, property damage, serious bodily injury and death and/or void your warranty.

### North America

+1.800.753.9221  
 Option 1 – Customer Care  
 Option 2 – Technical  
 Support

### Europe

Netherlands:  
 +31 800-0200135  
 France:  
 +33 800 901 793

### Europe

Germany:  
 800 1890272  
 Other Countries:  
 +31 13 5835404

### APAC

Shanghai:  
 + 86 21 2412 1618/19  
 Sydney:  
 +61 2 9751 8500



Our powerful portfolio of brands:

**CADDY ERICO HOFFMAN ILSCO SCHROFF TRACHTE**