

Flush-Mount Door Frames for Pull Box



Flush-Mount Door Frames are used in Screw-Cover Pull Boxes for telephone cabinet installations, in communication wiring and signal systems, or as a junction or pull box and switch enclosure.

FEATURES

Continuous hinge on door

Rugged black composite slide latch

Optional tamper-resistant lock kit includes cylinder lock, tamper-resistant screws and special driver bit

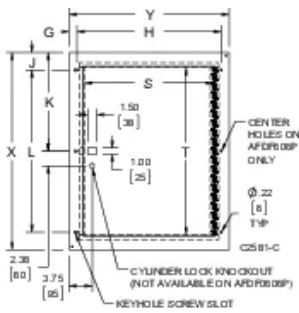
SPECIFICATIONS

Color Code:	ANSI 61
Color:	Gray
Material:	Mild Steel
Finish:	Powder Coated

Table 1/1

Catalog Number	Article Number	Height (H)	Width (W)	Thickness (T)	Door Size (T)	Door Size (S)
AFDF1818P	42950	508mm	508mm	1.9mm	381mm	381mm
AFDF1812P	42940	508mm	356mm	1.9mm	381mm	229mm
AFDF2418P	42960	660mm	508mm	1.9mm	533mm	381mm
AFDF3024P	42980	813mm	660mm	1.9mm	686mm	533mm
AFDF1212P	42930	356mm	356mm	1.9mm	229mm	229mm
AFDF2424P	42970	660mm	660mm	1.9mm	533mm	533mm
AFDF0606P	43630	203mm	203mm	1.9mm	76mm	76mm

DIAGRAMS



WARNING

nVent products shall be installed and used only as indicated in nVent's product instruction sheets and training materials. Instruction sheets are available at www.nvent.com and from your nVent customer service representative. Improper installation, misuse, misapplication or other failure to completely follow nVent's instructions and warnings may cause product malfunction, property damage, serious bodily injury and death and/or void your warranty.



Our powerful portfolio of brands:

CADDY ERICO HOFFMAN ILSCO SCHROFF TRACHTE