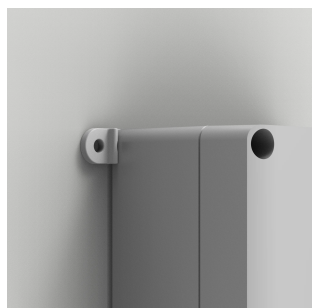


Wall Mounting Brackets, SFL



The terminal box can be easily mounted at the installation site without any need for internal access with these brackets. The brackets are corrosion resistant, which is perfect for harsh environments.

FEATURES

Description: Mounting brackets for wall fixing.

Material: Polycarbonate.

Finish: RAL 7035.

Pack quantity: 4 brackets with mounting accessories.

Four brackets with mounting accessories

SPECIFICATIONS

Table 1/1

| Catalog Number | Height | Width | Depth | Enclosure Material | Product Family | Material |
|----------------|--------|-------|-------|--------------------|----------------|---------------|
| SFL1E | 30mm | 15mm | 10mm | ABS | Terminal Boxes | Polycarbonate |

WARNING

nVent products shall be installed and used only as indicated in nVent's product instruction sheets and training materials. Instruction sheets are available at www.nvent.com and from your nVent customer service representative. Improper installation, misuse, misapplication or other failure to completely follow nVent's instructions and warnings may cause product malfunction, property damage, serious bodily injury and death and/or void your warranty.



Our powerful portfolio of brands:

CADDY ERICO HOFFMAN ILSCO SCHROFF TRACHTE