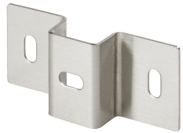


CleanTray Hanger Bracket



Clean Tray Hanger Brackets are used for supporting a Clean Tray run. The Clean Tray stainless steel system is designed to protect rated cabling in applications that require frequent washdown.

FEATURES

Clean Tray Hanger Brackets are used for supporting a Clean Tray run

The Clean Tray stainless steel system is designed to protect rated cabling in applications that require frequent washdown

SPECIFICATIONS

Finish: Brushed #3

Material: Stainless Steel 304

Table 1/1

| Catalog Number | Article Number | Type | Height | Width | Thickness |
|----------------|----------------|---------|--------|-------|-----------|
| CT44HB | 17165 | Bracket | 102mm | 102mm | 1.27mm |
| CT33HB | 17157 | Bracket | 76mm | 76mm | 1.27mm |
| CT22HB | 17153 | Bracket | 51mm | 51mm | 1.27mm |
| CT66HB | 17162 | Bracket | 152mm | 152mm | 1.27mm |

WARNING

nVent products shall be installed and used only as indicated in nVent's product instruction sheets and training materials. Instruction sheets are available at www.nvent.com and from your nVent customer service representative. Improper installation, misuse, misapplication or other failure to completely follow nVent's instructions and warnings may cause product malfunction, property damage, serious bodily injury and death and/or void your warranty.



Our powerful portfolio of brands:

CADDY ERICO HOFFMAN ILSCO SCHROFF TRACHTE