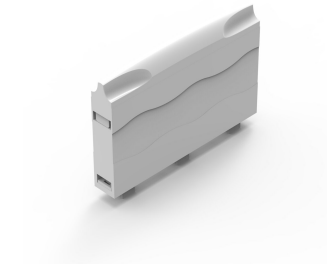


# Crossboard Connection Module, WOCB



Safe and convenient connection module for the CrossBoard platform.

## INDUSTRY STANDARDS

---

UL

IEC

## FEATURES

---

Description: Connection module 16 mm<sup>2</sup>, 3-pole with integrated spring terminals 1.5 - 16 mm<sup>2</sup>. Cover cap included.

Rated voltage: 690 V

Rated current: 63 A

Power dissipation at 80% load: 2.9 W

Dimensions: 22.5 × 160 × 115 mm

Pack quantity: 1 pc.

Approvals: IEC,UL

## SPECIFICATIONS

Table 1/1

| Catalog Number | Height | Width | Depth | Material | Finish       | Color      |
|----------------|--------|-------|-------|----------|--------------|------------|
| 01592          | 22.5mm | 160mm | 115mm | Plastic  | Smooth Matte | Light Gray |

## WARNING

nVent products shall be installed and used only as indicated in nVent's product instruction sheets and training materials. Instruction sheets are available at [www.nvent.com](http://www.nvent.com) and from your nVent customer service representative. Improper installation, misuse, misapplication or other failure to completely follow nVent's instructions and warnings may cause product malfunction, property damage, serious bodily injury and death and/or void your warranty.



Our powerful portfolio of brands:

**CADDY ERICO HOFFMAN ILSCO SCHROFF TRACHTE**