

Universal Restraint Clip

Data Solutions



CERTIFICATIONS



FEATURES

Attaches cable brace to structure

Meets CEN/TS 17551:2021 requirements for Seismic Sway Bracing

SPECIFICATIONS

Table 1/2

| Catalog Number | Article Number | Material | Finish | Brace Size | Hole Size (HS) | Thickness (T) |
|----------------|----------------|---------------------------------|-------------------|---------------|----------------|---------------|
| CSBURC38SS | 402522 | Stainless Steel 316 (EN 1.4401) | | #12, #18, #36 | 11mm | 4.27mm |
| CSBURC38 | 402198 | Steel | Electrogalvanized | #12, #18, #36 | 11mm | 4.27mm |
| CSBURC58SS | 402564 | Stainless Steel 316 (EN 1.4401) | | #12, #18, #36 | 17mm | 4.27mm |

| Catalog Number | Article Number | Material | Finish | Brace Size | Hole Size (HS) | Thickness (T) |
|----------------|----------------|----------|-------------------|---------------|----------------|---------------|
| CSBURC58 | 402200 | Steel | Electrogalvanized | #12, #18, #36 | 17mm | 4.27mm |
| CSBURC12 | 402199 | Steel | Electrogalvanized | #12, #18, #36 | 14mm | 4.27mm |

Table 2/2

| Catalog Number | Article Number | UL Listed Load | Certifications |
|----------------|----------------|----------------|---|
| CSBURC38SS | 402522 | 2750N | |
| CSBURC38 | 402198 | 3430N | ICC-ES, ICC-ES (Seismic Cable Bracing), cUL, UL, OSHPD/HCAI |
| CSBURC58SS | 402564 | 2750N | |
| CSBURC58 | 402200 | 3430N | ICC-ES (Seismic Cable Bracing), ICC-ES, OSHPD/HCAI, cUL, UL |
| CSBURC12 | 402199 | 3430N | ICC-ES (Seismic Cable Bracing), ICC-ES, UL, cUL, OSHPD/HCAI |

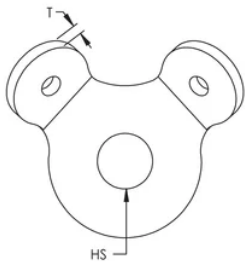
ADDITIONAL PRODUCT DETAILS

Brace member is not included.

Mount to the structure using the center hole. Loop cable through the holes in the bent tabs and swage in place.

| UL Loads | | |
|-------------|--------------|-------------|
| Part Number | Brace Member | Load Rating |
| CSBURC38 | CSB12CBL | 1859 N |
| | CSB18CBL | 3434 N |
| | CSB36CBL | 8492 N |
| CSBURC12 | CSB12CBL | 1859 N |
| | CSB18CBL | 3434 N |
| | CSB36CBL | 8492 N |
| CSBURC58 | CSB12CBL | 1859 N |
| | CSB18CBL | 3434 N |
| | CSB36CBL | 8492 N |

DIAGRAMS



WARNING

nVent products shall be installed and used only as indicated in nVent's product instruction sheets and training materials. Instruction sheets are available at www.nvent.com and from your nVent customer service representative. Improper installation, misuse, misapplication or other failure to completely follow nVent's instructions and warnings may cause product malfunction, property damage, serious bodily injury and death and/or void your warranty.



Our powerful portfolio of brands:

CADDY ERICO HOFFMAN ILSCO SCHROFF TRACHTE