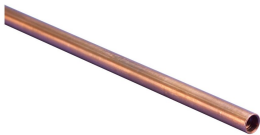


# Solid Copper Ground Rod, Sectional Internal Thread



## FEATURES

Solid copper sectional ground rod with internal threading

## SPECIFICATIONS

**Tensile Strength:** 50 MPa

**Material:** Copper

Table 1/1

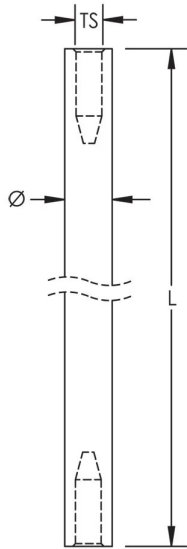
Catalog Number	Article Number	Ground Rod Diameter, Actual (Ø)	Thread Size (TS)	Length (L)	Unit Weight
SCR15	710070	15 mm	M10	1.2m	1.64 kg
SCR20	710080	20 mm	M10	1.2m	3.34 kg

## ADDITIONAL PRODUCT DETAILS

Due to the inherent softness of the copper material, special consideration should be given when driving this product into the soil.

## DIAGRAMS

---



## WARNING

---

nVent products shall be installed and used only as indicated in nVent's product instruction sheets and training materials. Instruction sheets are available at [www.nvent.com](http://www.nvent.com) and from your nVent customer service representative. Improper installation, misuse, misapplication or other failure to completely follow nVent's instructions and warnings may cause product malfunction, property damage, serious bodily injury and death and/or void your warranty.

### North America

+1.800.753.9221  
Option 1 – Customer Care  
Option 2 – Technical  
Support

### Europe

Netherlands:  
+31 800-0200135  
France:  
+33 800 901 793

### Europe

Germany:  
800 1890272  
Other Countries:  
+31 13 5835404

### APAC

Shanghai:  
+ 86 21 2412 1618/19  
Sydney:  
+61 2 9751 8500



Our powerful portfolio of brands:

**CADDY ERICO HOFFMAN ILSCO SCHROFF TRACHTE**