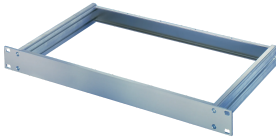


# MultipacPRO 19" Chassis Basic Kit

Such a kit enables a customer to configure the 3 different top / bottom covers.



## CERTIFICATIONS



## FEATURES

For non-standardized assemblies (1 ... 5 U) and standardized assemblies (1, 2 U) conforming to IEC 60297-3-105

Frame consists of two lateral parts and front/rear panel

Material: aluminium

Select further components (Accessories)

## SPECIFICATIONS

- Material:** Aluminum
- Type:** Configurable
- Product Family:** MultipacPRO
- EMC Shielding:** No (Retrofittable)
- Product Type:** Subrack/Chassis

Table 1/1

Catalog Number	Rack Height	Depth	Usable Width	Mounting	Complies With	Certifications
20860-202	1U	280mm	403mm	Rack	IEC 60297-3-100	RoHS

CatalogNumber	Rack Height	Depth	Usable Width	Mounting	Complies With	Certifications
20860-203	1U	340mm	403mm	Rack	IEC 60297-3-100	RoHS
20860-204	1U	400mm	403mm	Rack	IEC 60297-3-100	
20860-205	1U	460mm	403mm	Rack	IEC 60297-3-100	
20860-201	1U	220mm	403mm	Rack	IEC 60297-3-100	RoHS
20860-210	2U	220mm	403mm	Rack	IEC 60297-3-100	RoHS
20860-214	2U	460mm	403mm	Rack	IEC 60297-3-100	
20860-213	2U	400mm	403mm	Rack	IEC 60297-3-100	
20860-211	2U	280mm	403mm	Rack	IEC 60297-3-100	RoHS
20860-212	2U	340mm	403mm	Rack	IEC 60297-3-100	RoHS
20860-221	3U	400mm	403mm	Rack	IEC 60297-3-100	RoHS
20860-219	3U	280mm	403mm	Rack	IEC 60297-3-100	RoHS
20860-222	3U	460mm	403mm	Rack	IEC 60297-3-100	RoHS
20860-220	3U	340mm	403mm	Rack	IEC 60297-3-100	RoHS
20860-228	4U	280mm	403mm	Rack	IEC 60297-3-100	RoHS
20860-229	4U	340mm	403mm	Rack	IEC 60297-3-100	RoHS
20860-231	4U	460mm	403mm	Rack	IEC 60297-3-100	RoHS
20860-230	4U	400mm	403mm	Rack	IEC 60297-3-100	RoHS
20860-240	5U	460mm	403mm	Rack	IEC 60297-3-100	RoHS

## ADDITIONAL PRODUCT DETAILS

Please order mounting plate, cover and base plates, handles, telescopic slides separately.

Dimensions h = clear mounting height = H-8.1 mm, b = clear mounting width = 403 mm.

## WARNING

---

nVent products shall be installed and used only as indicated in nVent's product instruction sheets and training materials. Instruction sheets are available at [www.nvent.com](http://www.nvent.com) and from your nVent customer service representative. Improper installation, misuse, misapplication or other failure to completely follow nVent's instructions and warnings may cause product malfunction, property damage, serious bodily injury and death and/or void your warranty.

### North America

All locations  
+1.763.422.2661  
Chat with us:  
[nvent.com/schroff](http://nvent.com/schroff)

### Europe

Straubenhardt, Germany  
+49.7082.794.0  
Betschdorf, France  
+33.3.88.90.64.90  
Warsaw, Poland  
+48.22.209.98.35  
Assago, Italy  
+39.02.932.7141  
Chat with us:  
[nvent.com/schroff](http://nvent.com/schroff)

### Asia

Shanghai, China  
+86.21.2412.6943  
Qingdao, China  
+86.532.8771.6101  
Singapore  
+65.6768.5800  
Shin-Yokohama, Japan  
+81.45.476.0271  
Chat with us:  
[nvent.com/schroff](http://nvent.com/schroff)

### Middle East & India

Dubai, United Arab Emirates  
+971.4.378.1700  
Bangalore, India  
+91.80.6715.2001  
Istanbul, Turkey  
+90.216.250.7374  
Chat with us:  
[nvent.com/schroff](http://nvent.com/schroff)



Our powerful portfolio of brands:

**CADDY ERICO HOFFMAN ILSCO SCHROFF TRACHTE**