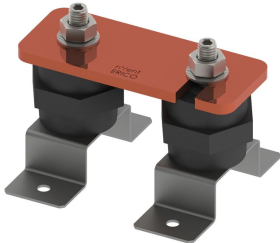


# Disconnecting Link



## FEATURES

Allows for quick and easy disconnection of the earthing system to facilitate testing of the earth in isolation

High conductivity, hard drawn, electrolytic tough pitch copper per EN 13601

Includes halogen-free polyamide insulators, stainless steel (EN 1.4401) hardware and mounting brackets

## SPECIFICATIONS

- Material:** Copper
- Complies With:** IEC® EN 62561-1:2017 Class H

Table 1/2

Catalog Number	Finish	Thread Size (TS)	Height (H)	Length (L)	Width 1 (W1)	Width 2 (W2)
DLINKT	Tinned	M10	90 mm	125mm	100 mm	50 mm
DLINKC	Bare	M10	90 mm	125mm	100 mm	50 mm

Table 2/2

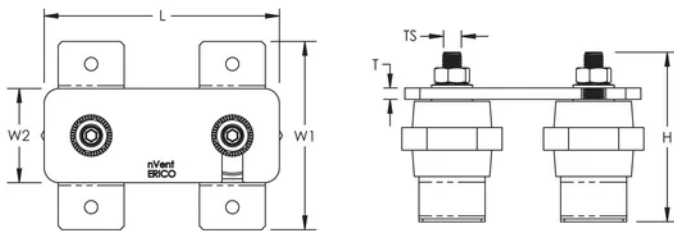
Catalog Number	Thickness (T)	Unit Weight
DLINKT	6 mm	0.77 kg
DLINKC	6 mm	0.77 kg

## ADDITIONAL PRODUCT DETAILS

Tinned finish is 8 microns according to ASTM B545 Service Class "C" for corrosive environments.

## DIAGRAMS

---



## WARNING

---

nVent products shall be installed and used only as indicated in nVent's product instruction sheets and training materials. Instruction sheets are available at [www.nvent.com](http://www.nvent.com) and from your nVent customer service representative. Improper installation, misuse, misapplication or other failure to completely follow nVent's instructions and warnings may cause product malfunction, property damage, serious bodily injury and death and/or void your warranty.

### North America

+1.800.753.9221

Option 1 – Customer Care

Option 2 – Technical

Support

### Europe

Netherlands:

+31 800-0200135

France:

+33 800 901 793

### Europe

Germany:

800 1890272

Other Countries:

+31 13 5835404

### APAC

Shanghai:

+ 86 21 2412 1618/19

Sydney:

+61 2 9751 8500



Our powerful portfolio of brands:

**CADDY**

**ERICO**

**HOFFMAN**

**ILSCO**

**SCHROFF**

**TRACHTE**