

# APY External Horizontal Wall Bracket



## FEATURES

Side mount saddle support for C-Profiles and strut

Complete with fixings

## SPECIFICATIONS

Table 1/2

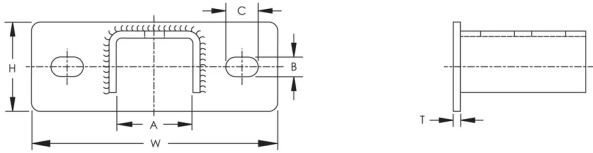
| Catalog Number | Article Number | Material                              | Finish            | Channel Type | Strut Type                        | Height (H) |
|----------------|----------------|---------------------------------------|-------------------|--------------|-----------------------------------|------------|
| APYSTRUTS6     | 584840         | Stainless Steel<br>316 (EN<br>1.4401) |                   |              | A (41 x 41 mm),<br>C (21 x 41 mm) | 50 mm      |
| APYE23EG       | 584740         | Steel                                 | Electrogalvanized | E2L, E2, E3  |                                   | 40 mm      |
| APYE4STRUTEG   | 584751         | Steel                                 | Electrogalvanized | E4           | A (41 x 41 mm),<br>C (21 x 41 mm) | 50 mm      |
| APYE01EG       | 584758         | Steel                                 | Electrogalvanized | E0L, E0, E1  |                                   | 40 mm      |

Table 2/2

| Catalog Number | Article Number | Width (W) | Thickness (T) | A     | B     | C     |
|----------------|----------------|-----------|---------------|-------|-------|-------|
| APYSTRUTS6     | 584840         | 144 mm    | 5 mm          | 43 mm | 12 mm | 19 mm |
| APYE23EG       | 584740         | 124 mm    | 5 mm          | 36 mm | 12 mm | 19 mm |
| APYE4STRUTEG   | 584751         | 144 mm    | 5 mm          | 43 mm | 12 mm | 19 mm |

| Catalog Number | Article Number | Width (W) | Thickness (T) | A     | B     | C     |
|----------------|----------------|-----------|---------------|-------|-------|-------|
| APYE01EG       | 584758         | 124 mm    | 5 mm          | 31 mm | 12 mm | 19 mm |

## DIAGRAMS



## WARNING

nVent products shall be installed and used only as indicated in nVent's product instruction sheets and training materials. Instruction sheets are available at [www.nvent.com](http://www.nvent.com) and from your nVent customer service representative. Improper installation, misuse, misapplication or other failure to completely follow nVent's instructions and warnings may cause product malfunction, property damage, serious bodily injury and death and/or void your warranty.

### North America

+1.800.753.9221  
Option 1 – Customer Care  
Option 2 – Technical  
Support

### Europe

Netherlands:  
+31 800-0200135  
France:  
+33 800 901 793

### Europe

Germany:  
800 1890272  
Other Countries:  
+31 13 5835404

### APAC

Shanghai:  
+ 86 21 2412 1618/19  
Sydney:  
+61 2 9751 8500



Our powerful portfolio of brands:

**CADDY ERICO HOFFMAN ILSCO SCHROFF TRACHTE**

