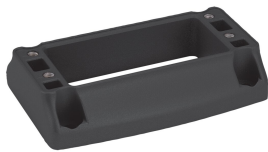


Syspend 180-Max Narrow Adapter



Syspend 180-Max Narrow Adapter can be attached to the Flange Coupling and Flange Elbow Coupling to create a narrower connection to an enclosure. Specifically designed for use with the Syspend Aluminum HMI Enclosures that have 66mm of usable depth. Does not inhibit coupling functionality.

FEATURES

Gasket and mounting hardware are included

Assembled Syspend 180 HMI Arm System has a max weight load of 180 lb. (81.6 kg)

SPECIFICATIONS

Material: Aluminum
Finish: Powder Coated

Table 1/1

| Catalog Number | Height | Width | Depth | Color | Color Code |
|----------------|--------|-------|-------|------------|------------|
| S1MA | 29mm | 125mm | 83mm | Jet Black | RAL 9005 |
| S1MAG | 29mm | 125mm | 83mm | Light Gray | RAL 7035 |

WARNING

nVent products shall be installed and used only as indicated in nVent's product instruction sheets and training materials. Instruction sheets are available at www.nvent.com and from your nVent customer service representative. Improper installation, misuse, misapplication or other failure to completely follow nVent's instructions and warnings may cause product malfunction, property damage, serious bodily injury and death and/or void your warranty.



Our powerful portfolio of brands:

CADDY ERICO HOFFMAN ILSCO SCHROFF TRACHTE