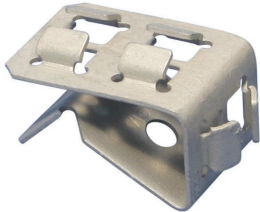


SCB Cable Snap Clip Adaptor



FEATURES

- Allows for parallel cable runs along the inboard of the flange
- Use with 24SC series snap clips to accommodate thicker flanges
- Supports up to three snap clips
- Requires only a hammer to install

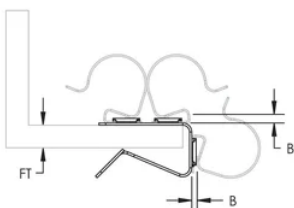
SPECIFICATIONS

- Finish:** nVent CADDY Armour
- Material:** Spring Steel

Table 1/1

| Catalog Number | Article Number | Flange Thickness (FT) | B |
|----------------|----------------|-----------------------|----------|
| SCB1220 | 188090 | 12 - 20 mm | 2 - 4 mm |
| SCB312 | 188080 | 3 - 12 mm | 2 - 4 mm |

DIAGRAMS



WARNING

nVent products shall be installed and used only as indicated in nVent's product instruction sheets and training materials. Instruction sheets are available at www.nvent.com and from your nVent customer service representative. Improper installation, misuse, misapplication or other failure to completely follow nVent's instructions and warnings may cause product malfunction, property damage, serious bodily injury and death and/or void your warranty.

North America

+1.800.753.9221
Option 1 – Customer Care
Option 2 – Technical
Support

Europe

Netherlands:
+31 800-0200135
France:
+33 800 901 793

Europe

Germany:
800 1890272
Other Countries:
+31 13 5835404

APAC

Shanghai:
+ 86 21 2412 1618/19
Sydney:
+61 2 9751 8500



Our powerful portfolio of brands:

CADDY ERICO HOFFMAN ILSCO SCHROFF TRACHTE

