

# Universal Restraint Clip



## CERTIFICATIONS



## FEATURES

Attaches cable brace to structure

Meets CEN/TS 17551:2021 requirements for Seismic Sway Bracing

## SPECIFICATIONS

**Finish:** Electrogalvanized

**Material:** Steel

Table 1/1

| Catalog Number | Article Number | Brace Size    | Hole Size (HS) | Thickness (T) | UL Listed Load |
|----------------|----------------|---------------|----------------|---------------|----------------|
| CSBURC38       | 402198         | #12, #18, #36 | 11 mm          | 4.27 mm       | 3430N          |
| CSBURC58       | 402200         | #12, #18, #36 | 17 mm          | 4.27 mm       | 3430N          |
| CSBURC12       | 402199         | #12, #18, #36 | 14 mm          | 4.27 mm       | 3430N          |

## ADDITIONAL PRODUCT DETAILS

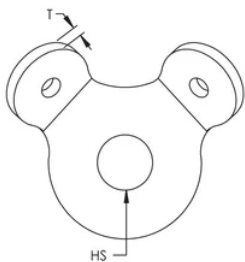
Brace member is not included.

Mount to the structure using the center hole. Loop cable through the holes in the bent tabs and swage in place.

| UL Loads    |              |             |
|-------------|--------------|-------------|
| Part Number | Brace Member | Load Rating |
| CSBURC38    | CSB12CBL     | 1859 N      |
|             | CSB18CBL     | 3434 N      |
|             | CSB36CBL     | 8492 N      |
| CSBURC12    | CSB12CBL     | 1859 N      |
|             | CSB18CBL     | 3434 N      |
|             | CSB36CBL     | 8492 N      |
| CSBURC58    | CSB12CBL     | 1859 N      |
|             | CSB18CBL     | 3434 N      |
|             | CSB36CBL     | 8492 N      |

## DIAGRAMS

---



## WARNING

---

nVent products shall be installed and used only as indicated in nVent's product instruction sheets and training materials. Instruction sheets are available at [www.nvent.com](http://www.nvent.com) and from your nVent customer service representative. Improper installation, misuse, misapplication or other failure to completely follow nVent's instructions and warnings may cause product malfunction, property damage, serious bodily injury and death and/or void your warranty.

**North America**

+1.800.753.9221

Option 1 – Customer Care

Option 2 – Technical

Support

**Europe**

Netherlands:

+31 800-0200135

France:

+33 800 901 793

**Europe**

Germany:

800 1890272

Other Countries:

+31 13 5835404

**APAC**

Shanghai:

+ 86 21 2412 1618/19

Sydney:

+61 2 9751 8500



Our powerful portfolio of brands:

**CADDY ERICO HOFFMAN ILSCO SCHROFF TRACHTE**

