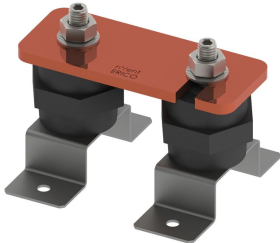


Disconnecting Link



FEATURES

Allows for quick and easy disconnection of the earthing system to facilitate testing of the earth in isolation

High conductivity, hard drawn, electrolytic tough pitch copper per EN 13601

Includes halogen-free polyamide insulators, stainless steel (EN 1.4401) hardware and mounting brackets

SPECIFICATIONS

- Material:** Copper
- Complies With:** IEC® EN 62561-1:2017 Class H

Table 1/2

| Catalog Number | Finish | Thread Size (TS) | Height (H) | Length (L) | Width 1 (W1) | Width 2 (W2) |
|----------------|--------|------------------|------------|------------|--------------|--------------|
| DLINKT | Tinned | M10 | 90 mm | 125mm | 100 mm | 50 mm |
| DLINKC | Bare | M10 | 90 mm | 125mm | 100 mm | 50 mm |

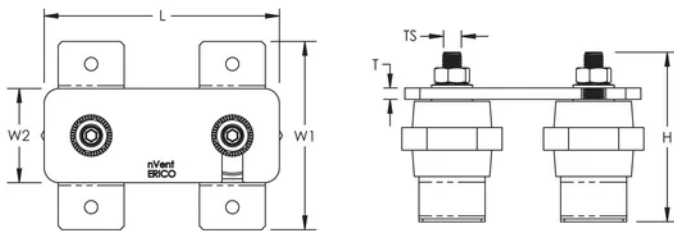
Table 2/2

| Catalog Number | Thickness (T) | Unit Weight |
|----------------|---------------|-------------|
| DLINKT | 6 mm | 0.77 kg |
| DLINKC | 6 mm | 0.77 kg |

ADDITIONAL PRODUCT DETAILS

Tinned finish is 8 microns according to ASTM B545 Service Class "C" for corrosive environments.

DIAGRAMS



WARNING

nVent products shall be installed and used only as indicated in nVent's product instruction sheets and training materials. Instruction sheets are available at www.nvent.com and from your nVent customer service representative. Improper installation, misuse, misapplication or other failure to completely follow nVent's instructions and warnings may cause product malfunction, property damage, serious bodily injury and death and/or void your warranty.

North America

+1.800.753.9221
Option 1 – Customer Care
Option 2 – Technical
Support

Europe

Netherlands:
+31 800-0200135
France:
+33 800 901 793

Europe

Germany:
800 1890272
Other Countries:
+31 13 5835404

APAC

Shanghai:
+ 86 21 2412 1618/19
Sydney:
+61 2 9751 8500



Our powerful portfolio of brands:

CADDY ERICO HOFFMAN ILSCO SCHROFF TRACHTE