

# Industrial Stack Cable/Terminal Holder



## FEATURES

Threaded clamp for supporting air terminals or routing downconductors

Available with long or short studs

## SPECIFICATIONS

**Material:** Brass

Table 1/2

Catalog Number	Finish	Diameter (Ø)	Thread Size (TS)	Thread Length (TL)	Depth (D)	Height (H)
LPC48058SH	Bare	15.88 mm	1/2" UNC	22.22mm	60.33mm	20.06 mm
LPC48034SH	Bare	19.05 mm	1/2" UNC	22.22mm	60.33mm	20.06 mm
LPC48058LG	Bare	15.88 mm	1/2" UNC	38.1mm	76.2mm	20.06 mm
LPC48034LG	Bare	19.05 mm	1/2" UNC	38.1mm	76.2mm	20.06 mm
LPLC48058SH	Lead Covered	15.88 mm	1/2" UNC	22.22mm	60.33mm	20.06 mm
LPLC48034SH	Lead Covered	19.05 mm	1/2" UNC	22.22mm	60.33mm	20.06 mm
LPLC48058LG	Lead Covered	15.88 mm	1/2" UNC	38.1mm	76.2mm	20.06 mm
LPLC48034LG	Lead Covered	19.05 mm	1/2" UNC	38.1mm	76.2mm	20.06 mm

Table 2/2

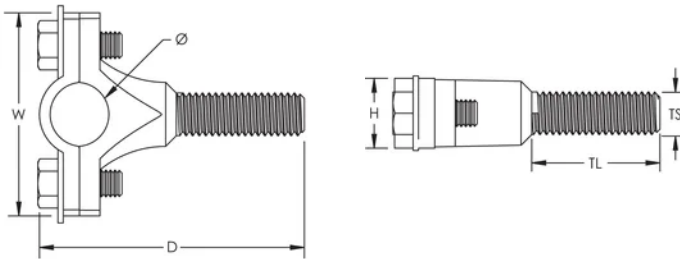
Catalog Number	Width (W)	Unit Weight
LPC48058SH	60.33 mm	0.38 kg
LPC48034SH	60.33 mm	0.38 kg

Catalog Number	Width (W)	Unit Weight
LPC48058LG	60.33 mm	0.4 kg
LPC48034LG	60.33 mm	0.4 kg
LPLC48058SH	60.33 mm	0.42 kg
LPLC48034SH	60.33 mm	0.42 kg
LPLC48058LG	60.33 mm	0.45 kg
LPLC48034LG	60.33 mm	0.45 kg

## ADDITIONAL PRODUCT DETAILS

Where applicable, lead covering thickness is a minimum of 1/16" (1.59 mm) and is not included in the stated dimensions.

## DIAGRAMS



## WARNING

nVent products shall be installed and used only as indicated in nVent's product instruction sheets and training materials. Instruction sheets are available at [www.nvent.com](http://www.nvent.com) and from your nVent customer service representative. Improper installation, misuse, misapplication or other failure to completely follow nVent's instructions and warnings may cause product malfunction, property damage, serious bodily injury and death and/or void your warranty.

⚠ WARNING: This product can expose you to chemicals including lead, which is known to the State of California to cause cancer and birth defects or other reproductive harm. For more information go to [www.P65Warnings.ca.gov](http://www.P65Warnings.ca.gov).

**North America**

+1.800.753.9221

Option 1 – Customer Care

Option 2 – Technical

Support

**Europe**

Netherlands:

+31 800-0200135

France:

+33 800 901 793

**Europe**

Germany:

800 1890272

Other Countries:

+31 13 5835404

**APAC**

Shanghai:

+ 86 21 2412 1618/19

Sydney:

+61 2 9751 8500



Our powerful portfolio of brands:

**CADDY**

**ERICO**

**HOFFMAN**

**ILSCO**

**SCHROFF**

**TRACHTE**