

Single Hole Cable Strap



CERTIFICATIONS



FEATURES

Secures lightning protection conductors and prevents displacement

Mechanically secured with screws or nails

SPECIFICATIONS

Table 1/2

| Catalog Number | Article Number | Material | Finish | Outer Diameter (OD) | Depth (D) | Width (W) |
|----------------|----------------|----------|--------|---------------------|-----------|-----------|
| PC010C | 711390 | Copper | | 10 mm | 15mm | 42 mm |
| PC010A | 711040 | Aluminum | | 10 mm | 15mm | 42 mm |
| LPC801 | | Copper | | 11.91 mm | 9.84mm | 25 mm |
| LPC803L | | Copper | Tinned | 11.91 mm | 12.7mm | 25 mm |
| LPA803 | | Aluminum | | 11.91 mm | 12.7mm | 25 mm |
| LPC803 | | Copper | | 11.91 mm | 12.7mm | 25 mm |
| LPC801L | | Copper | Tinned | 11.91 mm | 9.84mm | 25 mm |
| PC008A | 711370 | Aluminum | | 7 mm | 10mm | 28 mm |
| LPA807 | | Aluminum | | 33 mm | 31.75mm | 76.71 mm |

| Catalog Number | Article Number | Material | Finish | Outer Diameter (OD) | Depth (D) | Width (W) |
|----------------|----------------|----------|--------|---------------------|-----------|-----------|
| LPC807L | | Copper | Tinned | 33 mm | 31.75mm | 76.71 mm |
| LPC807 | | Copper | | 33 mm | 31.75mm | 76.71 mm |
| LPC805 | | Copper | | 12.7 mm | 15.88mm | 31.75 mm |
| LPA805 | | Aluminum | | 12.7 mm | 15.88mm | 31.75 mm |
| LPC805L | | Copper | Tinned | 12.7 mm | 15.88mm | 31.75 mm |
| LPC80538 | | Copper | | 12.7 mm | 15.88mm | 31.75 mm |

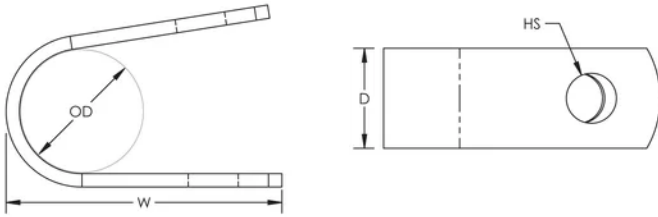
Table 2/2

| Catalog Number | Article Number | Hole Size (HS) | Certifications |
|----------------|----------------|----------------|---|
| PC010C | 711390 | 7 mm | |
| PC010A | 711040 | 7 mm | |
| LPC801 | | 4.76 mm | E202878-Combined_CoC, E202878-Combined_CoC |
| LPC803L | | 4.76 mm | E202878-Combined_CoC, E202878-Combined_CoC |
| LPA803 | | 4.76 mm | |
| LPC803 | | 4.76 mm | E202878-Combined_CoC, E202878-Combined_CoC |
| LPC801L | | 4.76 mm | E202878-Combined_CoC, E202878-Combined_CoC |
| PC008A | 711370 | 5 mm | |
| LPA807 | | 7.14 mm | |
| LPC807L | | 7.14 mm | E202878-Combined_CoC, E202878-Combined_CoC |
| LPC807 | | 7.14 mm | E202878-Combined_CoC, E202878-Combined_CoC |
| LPC805 | | 7.14 mm | E202878-Combined_CoC, E202878-Combined_CoC |
| LPA805 | | 7.14 mm | |
| LPC805L | | 7.14 mm | E202878-Combined_CoC, E202878-Combined_CoC |
| LPC80538 | | 9.53 mm | E202878-Combined_CoC, E202878-Combined_CoC |

ADDITIONAL PRODUCT DETAILS

Typically installed every 3' (0.9 m) of conductor.

DIAGRAMS



WARNING

nVent products shall be installed and used only as indicated in nVent's product instruction sheets and training materials. Instruction sheets are available at www.nvent.com and from your nVent customer service representative. Improper installation, misuse, misapplication or other failure to completely follow nVent's instructions and warnings may cause product malfunction, property damage, serious bodily injury and death and/or void your warranty.

North America

+1.800.753.9221
Option 1 – Customer Care
Option 2 – Technical
Support

Europe

Netherlands:
+31 800-0200135
France:
+33 800 901 793

Europe

Germany:
800 1890272
Other Countries:
+31 13 5835404

APAC

Shanghai:
+ 86 21 2412 1618/19
Sydney:
+61 2 9751 8500



Our powerful portfolio of brands:

CADDY ERICO HOFFMAN ILSCO SCHROFF TRACHTE