

C2SW Side Weldable Half-Coupler, Offset Flat, 40 mm

CATALOG NUMBER

EL40C2SWN



FEATURES

Designed for connecting reinforcing bar parallel to structural steel sections or plates

Machined from weldable grades of steel

PRODUCT ATTRIBUTES

Material: Steel

Finish: Plain

Rebar Size, Metric: 40 mm

Diameter (Ø): 70 mm

Length (L): 110mm

Height 1 (H1): 60mm

Height 2 (H2): 30mm

Bar Depth (BD): 55mm

Unit Weight: 2.47 kg

Designed to Meet: AASHTO; ABNT NBR 8548:1984; ACI 318 Type 1 (125% Specified Yield); ACI 318 Type 2 (Specified Tensile); ACI 349; ACI 359; AS3600

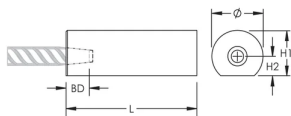
Package Quantity: 8

ADDITIONAL PRODUCT DETAILS

Bar dimensions and weights listed may vary by region. Coupler sizes not shown may be available by special order. Contact your nVent LENTON representative for more information.

The design of the weld, the selection of electrode, and other relevant choices depend on the chemical and physical properties of the structural steel to which the couplers are welded. Engineers who design assemblies should adhere to all appropriate regulations.

DIAGRAMS



WARNING

nVent products shall be installed and used only as indicated in nVent's product instruction sheets and training materials. Instruction sheets are available at www.nvent.com and from your nVent customer service representative. Improper installation, misuse, misapplication or other failure to completely follow nVent's instructions and warnings may cause product malfunction, property damage, serious bodily injury and death and/or void your warranty.

North America

+1.800.753.9221

Option 1 – Customer Care

Option 2 – Technical

Support

Europe

Netherlands:

+31 800-0200135

France:

+33 800 901 793

Europe

Germany:

800 1890272

Other Countries:

+31 13 5835404

APAC

Shanghai:

+ 86 21 2412 1618/19

Sydney:

+61 2 9751 8500



Our powerful portfolio of brands:

CADDY

ERICO

HOFFMAN

ILSCO

SCHROFF

TRACHTE