

# Strap Cable/Point to Pipe Support



## CERTIFICATIONS



## FEATURES

Attaches air terminals or conductors to pipe or handrails

## SPECIFICATIONS

Table 1/2

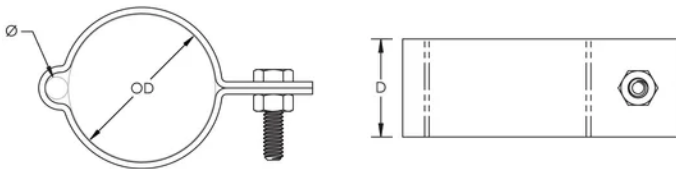
Catalog Number	Material	Finish	Diameter (Ø)	Outer Diameter (OD)	Depth (D)	Unit Weight
LPA672	Aluminum		10.2 - 15.88 mm	60.3 - 73.03 mm	31.75mm	0.05 kg
LPA671	Aluminum		10.2 - 15.88 mm	48.3 - 60.96 mm	31.75mm	0.05 kg
LPC671	Copper	Tinned	10.2 - 15.88 mm	48.3 - 60.96 mm	31.75mm	0.09 kg
LPC672	Copper	Tinned	10.2 - 15.88 mm	60.3 - 73.03 mm	31.75mm	0.12 kg
LPC673	Copper	Tinned	10.2 - 15.88 mm	88.9 - 101.6 mm	31.75mm	0.17 kg
LPA673	Aluminum		10.2 - 15.88 mm	88.9 - 101.6 mm	31.75mm	0.17 kg

Catalog Number	Material	Finish	Diameter (Ø)	Outer Diameter (OD)	Depth (D)	Unit Weight
LPC674	Copper	Tinned	10.2 - 15.88 mm	114.3 - 127 mm	31.75mm	0.23 kg
LPA674	Aluminum		10.2 - 15.88 mm	114.3 - 127 mm	31.75mm	0.23 kg

Table 2/2

Catalog Number	Certifications
LPA672	
LPA671	
LPC671	E202878-Combined_CoC, E202878-Combined_CoC
LPC672	E202878-Combined_CoC, E202878-Combined_CoC
LPC673	E202878-Combined_CoC, E202878-Combined_CoC
LPA673	
LPC674	E202878-Combined_CoC, E202878-Combined_CoC
LPA674	

## DIAGRAMS



## WARNING

nVent products shall be installed and used only as indicated in nVent's product instruction sheets and training materials. Instruction sheets are available at [www.nvent.com](http://www.nvent.com) and from your nVent customer service representative. Improper installation, misuse, misapplication or other failure to completely follow nVent's instructions and warnings may cause product malfunction, property damage, serious bodily injury and death and/or void your warranty.

**North America**

+1.800.753.9221

Option 1 – Customer Care

Option 2 – Technical

Support

**Europe**

Netherlands:

+31 800-0200135

France:

+33 800 901 793

**Europe**

Germany:

800 1890272

Other Countries:

+31 13 5835404

**APAC**

Shanghai:

+ 86 21 2412 1618/19

Sydney:

+61 2 9751 8500



Our powerful portfolio of brands:

**CADDY**

**ERICO**

**HOFFMAN**

**ILSCO**

**SCHROFF**

**TRACHTE**