

# A12 Standard Coupler, Plain, European Design, 14 mm

## CATALOG NUMBER

**EL14A12EE**



The European Design Version (Suffix EE) is currently being phased out. All future projects should be designed with the Worldwide Design Version (Suffixes N and LN). This change is being done in order to simplify our product offering and eliminate redundant designs. Please contact Customer Care or your local Sales Engineer/Manager if you require more information on this transition.

## CERTIFICATIONS



## FEATURES

Designed to splice the same diameter bars where the second bar can be rotated and is not restricted in its axial direction

Slim design maintains concrete cover

Installs quickly and easily

## PRODUCT ATTRIBUTES

Article Number: 150020

Material: Steel

Finish: Plain

Design Version: European (Specialty Materials)

Rebar Size, Metric: 14 mm

Hex Width (W): 22 mm

Length (L): 55mm

Bar Depth (BD): 21mm

Bar Gap (BG): 13mm

Unit Weight: 0.13 kg

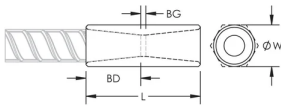
Designed to Meet: AASHTO;ABNT NBR 8548:1984;ACI 318 Type 1 (125% Specified Yield);ACI 318 Type 2 (Specified Tensile);ACI 349;ACI 359;AS3600

## ADDITIONAL PRODUCT DETAILS

Bar dimensions and weights listed may vary by region. Coupler sizes not shown may be available by special order. Contact your nVent LENTON representative for more information.

Suffix "EE" has been added to some part numbers to clarify design version among regions.

## DIAGRAMS



## WARNING

nVent products shall be installed and used only as indicated in nVent's product instruction sheets and training materials. Instruction sheets are available at [www.nvent.com](http://www.nvent.com) and from your nVent customer service representative. Improper installation, misuse, misapplication or other failure to completely follow nVent's instructions and warnings may cause product malfunction, property damage, serious bodily injury and death and/or void your warranty.

### North America

+1.800.753.9221

Option 1 – Customer Care

Option 2 – Technical

Support

### Europe

Netherlands:

+31 800-0200135

France:

+33 800 901 793

### Europe

Germany:

800 1890272

Other Countries:

+31 13 5835404

### APAC

Shanghai:

+ 86 21 2412 1618/19

Sydney:

+61 2 9751 8500



Our powerful portfolio of brands:

**CADDY**

**ERICO**

**HOFFMAN**

**ILSCO**

**SCHROFF**

**TRACHTE**