

1-1 Hole Angle Bracket



FEATURES

Used to create metal frames with nVent CADDY Eristrut channels

SPECIFICATIONS

Table 1/2

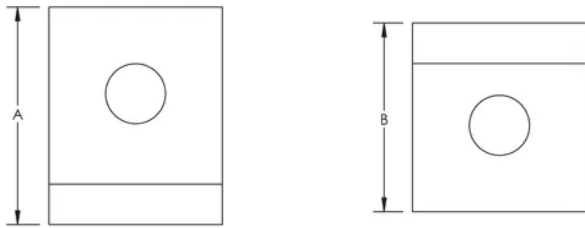
Catalog Number	Article Number	E-Number	Material	Finish	A	B
ZW201	313340	1319730	Steel	Hot-Dip Galvanized	58 mm	42 mm
ZW200	313330	1319729	Steel	Hot-Dip Galvanized	50 mm	48 mm
ZWA201	387610	1319839	Steel	Hot-Dip Galvanized	58 mm	42 mm
ZWA200EG	387601		Steel	Electrogalvanized	50 mm	47 mm
ZWA200S6	388670	1319857	Stainless Steel 316 (EN 1.4401)		50 mm	48 mm
ZWA200	387600	1319838	Steel	Hot-Dip Galvanized	50 mm	48 mm

Table 2/2

Catalog Number	Article Number	E-Number	Screw Included	Screw Diameter (Sc)	Screw Length (L)
ZW201	313340	1319730	Yes	10 mm	25mm

Catalog Number	Article Number	E-Number	Screw Included	Screw Diameter (Sc)	Screw Length (L)
ZW200	313330	1319729	Yes	10 mm	25mm
ZWA201	387610	1319839	No		
ZWA200EG	387601		No		
ZWA200S6	388670	1319857	No		
ZWA200	387600	1319838	No		

DIAGRAMS



WARNING

nVent products shall be installed and used only as indicated in nVent's product instruction sheets and training materials. Instruction sheets are available at www.nvent.com and from your nVent customer service representative. Improper installation, misuse, misapplication or other failure to completely follow nVent's instructions and warnings may cause product malfunction, property damage, serious bodily injury and death and/or void your warranty.

North America

+1.800.753.9221
Option 1 – Customer Care
Option 2 – Technical Support

Europe

Netherlands:
+31 800-0200135
France:
+33 800 901 793

Europe

Germany:
800 1890272
Other Countries:
+31 13 5835404

APAC

Shanghai:
+ 86 21 2412 1618/19
Sydney:
+61 2 9751 8500



Our powerful portfolio of brands:

CADDY ERICO HOFFMAN ILSCO SCHROFF TRACHTE

