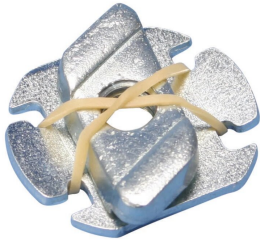


C-FIX Nut/Washer



FEATURES

C-Fix quick fit channel nut

Suitable for C-Profiles 0-4

SPECIFICATIONS

Finish: Electrogalvanized

Material: Steel

Table 1/1

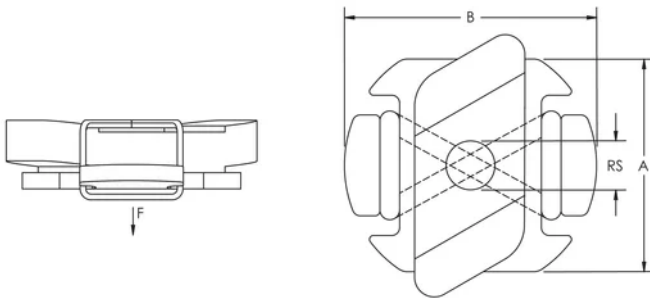
Catalog Number	Article Number	Rod Size (RS)	A	B	Static Load
CFIXM8	584510	8	27 mm	32 mm	300N
CFIXM10	584520	10	27 mm	32 mm	300N
CFIXM6	584500	6	27 mm	32 mm	300N

ADDITIONAL PRODUCT DETAILS

Sliding force F2 is limited to 600 N for all types of Nuts and T-Bolts for C-channel System.

Nuts and T-Bolts for C-channel System	
C-Channel Type	Pullout Force F1
E0	1100 N
E0L	700 N
E1	1800 N
E2	800 N
E2L	800 N
E3	1500 N
E4	1300 N

DIAGRAMS



WARNING

nVent products shall be installed and used only as indicated in nVent's product instruction sheets and training materials. Instruction sheets are available at www.nvent.com and from your nVent customer service representative. Improper installation, misuse, misapplication or other failure to completely follow nVent's instructions and warnings may cause product malfunction, property damage, serious bodily injury and death and/or void your warranty.

North America

+1.800.753.9221
 Option 1 – Customer Care
 Option 2 – Technical Support

Europe

Netherlands:
 +31 800-0200135
 France:
 +33 800 901 793

Europe

Germany:
 800 1890272
 Other Countries:
 +31 13 5835404

APAC

Shanghai:
 + 86 21 2412 1618/19
 Sydney:
 +61 2 9751 8500



Our powerful portfolio of brands:

CADDY ERICO HOFFMAN ILSCO SCHROFF TRACHTE

