

# 1 Hole Offset Lug

## Data Solutions



### FEATURES

Provides an efficient bolting surface for grounding and power applications

Electrolytic grade copper

For use with nVent ERICO Cadweld type LA connections only

### SPECIFICATIONS

Table 1/3

Catalog Number	Material	Finish	Type	Height (H)	Length (L)	Width (W)
B101CEOL001	Copper	Tinned	NEMA®	15.88mm	63.5mm	25.4mm
B101CEOL	Copper	Tinned	NEMA®	15.88mm	63.5mm	25.4mm
B101QQOL	Copper	Tinned	NEMA®	15.87mm	64mm	25.4mm
B101SQOL	Copper	Tinned	NEMA®	14.26mm	68mm	25.4mm
B101DEOL	Copper	Tinned	NEMA®	17.53mm	68.33mm	25.4mm
B305TC	Copper	Tinned	Non-NEMA®	20mm	91.4mm	30mm
B305SS	Stainless Steel 304 (EN 1.4301)		Non-NEMA®	20.07mm	91.44mm	29.97mm
B101EFOL001	Copper	Tinned	NEMA®	19.05mm	76.2mm	31.75mm
B101EGOL	Copper	Tinned	NEMA®	19.05mm	82.55mm	38.1mm

Catalog Number	Material	Finish	Type	Height (H)	Length (L)	Width (W)
B101EEOL	Copper	Tinned	NEMA®	19.05mm	76.2mm	25.4mm
B101GGOL	Copper	Tinned	NEMA®	31.75mm	107.95mm	38.1mm
B101GHOL001	Copper	Tinned	NEMA®	31.75mm	127mm	50.8mm
B101GHOL	Copper	Tinned	NEMA®	31.75mm	127mm	50.8mm

Table 2/3

Catalog Number	Thickness (T)	A	B	C	Hole Size (HS)	Angle (a)
B101CEOL001	3.18mm	12.7mm	25.4mm	22.23mm	17.46mm	45°
B101CEOL	3.18mm	12.7mm	25.4mm	22.23mm	11.11mm	45°
B101QQOL	3.17mm	12mm	22mm	19mm	11.1mm	45°
B101SQOL	4.76mm	14mm	28mm	20.5mm	14.2mm	45°
B101DEOL	4.76mm	14.3mm	28.58mm	22.23mm	14.29mm	45°
B305TC	5mm	15mm	33.78mm	39.88mm	17mm	45°
B305SS	5.08mm	15mm	33.78mm	39.88mm	17mm	45°
B101EFOL001	6.35mm	15.9mm	32.54mm	26.92mm	17.46mm	45°
B101EGOL	6.35mm	19.1mm	38.1mm	26.92mm	17.46mm	45°
B101EEOL	6.35mm	15.9mm	32.54mm	26.92mm	14.29mm	45°
B101GGOL	9.53mm	19.1mm	44.45mm	38.1mm	17.46mm	45°
B101GHOL001	9.53mm	25.4mm	60.33mm	38.1mm	20.64mm	45°
B101GHOL	9.53mm	25.4mm	60.33mm	38.1mm	17.46mm	45°

Table 3/3

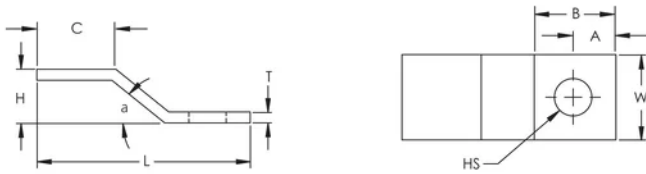
Catalog Number	Equivalent Conductor Size
B101CEOL001	80.63mm <sup>2</sup>
B101CEOL	80.63mm <sup>2</sup>
B101QQOL	81mm <sup>2</sup>
B101SQOL	121mm <sup>2</sup>
B101DEOL	120.94mm <sup>2</sup>
B305TC	152.23mm <sup>2</sup>
B305SS	152.23mm <sup>2</sup>
B101EFOL001	201.57mm <sup>2</sup>
B101EGOL	241.89mm <sup>2</sup>
B101EEOL	161.26mm <sup>2</sup>
B101GGOL	362.83mm <sup>2</sup>
B101GHOL001	483.77mm <sup>2</sup>

Catalog Number	Equivalent Conductor Size
B101GHOL	483.77mm <sup>2</sup>

## ADDITIONAL PRODUCT DETAILS

For sizes not listed, contact us.

## DIAGRAMS



## WARNING

nVent products shall be installed and used only as indicated in nVent's product instruction sheets and training materials. Instruction sheets are available at [www.nvent.com](http://www.nvent.com) and from your nVent customer service representative. Improper installation, misuse, misapplication or other failure to completely follow nVent's instructions and warnings may cause product malfunction, property damage, serious bodily injury and death and/or void your warranty.



Our powerful portfolio of brands:

**CADDY ERICO HOFFMAN ILSCO SCHROFF TRACHTE**