

nVent CADDY Microfix Double Pipe Strap, Adjustable



FEATURES

Fast installation of parallel pipes from a single anchor

Height adjustable

Category II noise reduction according to DIN EN ISO 3822-1

Compliant for sound insulation design according to DIN 4109

Reaction-to-fire classification is "E" in compliance with DIN EN 13501-1

SPECIFICATIONS

- Temperature:** -50 to 110 °C
- Color:** Black
- Finish:** Electrogalvanized
- Material:** Steel;EPDM-SBR Rubber

Table 1/2

Catalog Number	Article Number	NB/DN	Outer Diameter (OD)	Width (W)	Thickness (T)	A
MDS019	400660	10	15 - 19 mm	20 mm	0.8 mm	60 mm
MDS035	400663	25	32 - 35 mm	20 mm	0.8 mm	90 mm
MDS023	400661	15	21 - 23 mm	20 mm	0.8 mm	60 mm
MDS015	400659	8	12 - 14 mm	20 mm	0.8 mm	60 mm
MDS028	400662	20	26 - 28 mm	20 mm	0.8 mm	90 mm

Catalog Number	Article Number	NB/DN	Outer Diameter (OD)	Width (W)	Thickness (T)	A
MDS043	400664	32	40 - 43 mm	20 mm	1 mm	90 mm

Table 2/2

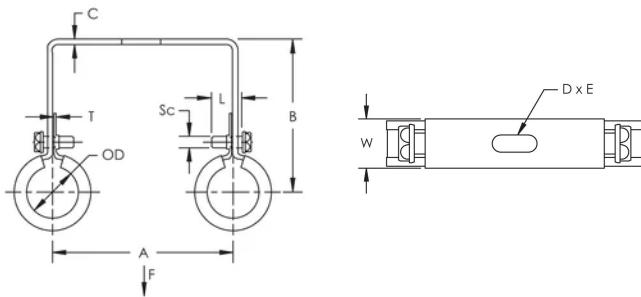
Catalog Number	Article Number	B	Static Load
MDS019	400660	54 mm	450N
MDS035	400663	65 mm	450N
MDS023	400661	60 mm	450N
MDS015	400659	51 mm	450N
MDS028	400662	62 mm	450N
MDS043	400664	68 mm	450N

- C:** 2 mm
- Screw Diameter (Sc):** 6
- E:** 8.5 mm
- D:** 20 mm
- Screw Length (L):** 20mm

ADDITIONAL PRODUCT DETAILS

Lining is EPDM rubber.

DIAGRAMS



WARNING

nVent products shall be installed and used only as indicated in nVent's product instruction sheets and training materials. Instruction sheets are available at www.nvent.com and from your nVent customer service representative. Improper installation, misuse, misapplication or other failure to completely follow nVent's instructions and warnings may cause product malfunction, property damage, serious bodily injury and death and/or void your warranty.

North America

+1.800.753.9221

Option 1 – Customer Care

Option 2 – Technical

Support

Europe

Netherlands:

+31 800-0200135

France:

+33 800 901 793

Europe

Germany:

800 1890272

Other Countries:

+31 13 5835404

APAC

Shanghai:

+ 86 21 2412 1618/19

Sydney:

+61 2 9751 8500



Our powerful portfolio of brands:

CADDY ERICO HOFFMAN ILSCO SCHROFF TRACHTE

