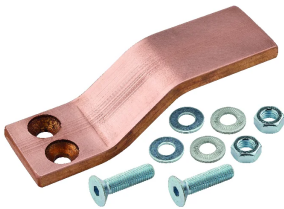


# FleXbus Extender Type 3 Bended and Plain, 220 mm<sup>2</sup>, 360 mm<sup>2</sup>, 545 mm<sup>2</sup>

## Data Solutions

### CATALOG NUMBER

**FLEXEXT50A3**



### CERTIFICATIONS



### FEATURES

Designed to extend the FleXbus Conductors

Delivered with the appropriate countersunk head screws, nuts and washers

### PRODUCT ATTRIBUTES

Article Number: 508112

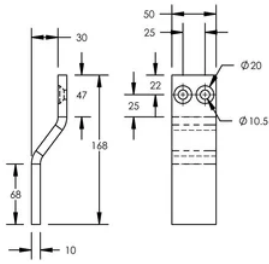
Material: Copper

Conductor Size: 220 mm<sup>2</sup>; 360 mm<sup>2</sup>; 545 mm<sup>2</sup>

Unit Weight: 0.83kg

## DIAGRAMS

---



## WARNING

---

nVent products shall be installed and used only as indicated in nVent's product instruction sheets and training materials. Instruction sheets are available at [www.nvent.com](http://www.nvent.com) and from your nVent customer service representative. Improper installation, misuse, misapplication or other failure to completely follow nVent's instructions and warnings may cause product malfunction, property damage, serious bodily injury and death and/or void your warranty.



Our powerful portfolio of brands:

**CADDY ERICO HOFFMAN ILSCO SCHROFF TRACHTE**