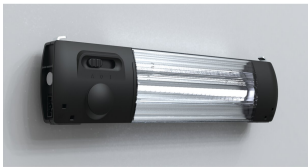


EL LED Enclosure Light



An LED light specially designed for nVent HOFFMAN enclosures. Tool-free assembly reduces the assembly time. Simple through wiring based on a plug and play system.

FEATURES

Description: LED enclosure light specially designed for nVent HOFFMAN enclosures. Fast and tool-free assembly thanks to a latching hook system designed to fit the 25mm hole pattern on nVent HOFFMAN enclosures. May be fitted horizontally or vertically.

Please be advised that when using the clamp mechanism to mount these lights, they cannot be installed on the top rail of ProLine and ProLine G2 cabinet frames.

SPECIFICATIONS

Color Temperature:	4000K
Operating Temperature:	-20 to 55°C
Color:	Black
Lamp Type:	LED
Light Color:	Neutral White
Material:	Plastic
Finish:	Smooth

Table 1/1

Catalog Number	Article Number	Height	Width	Depth	Socket Type	Light Output
EL900D	EL900D	76mm	314mm	48mm	NA	900lm
EL1200D24V	EL1200D24V	76mm	315mm	48mm	NA	1200lm
EL1200M	EL1200M	76mm	315mm	48mm	NA	1200lm
EL900DS-US	EL900DS-US	76mm	364mm	48mm	Type B	900lm
EL1200M24V	EL1200M24V	76mm	315mm	48mm	NA	1200lm
EL1200MS-US	EL1200MS-US	76mm	364mm	48mm	Type B	1200lm
EL1200DS-US	EL1200DS-US	76mm	364mm	48mm	Type B	1200lm

WARNING

nVent products shall be installed and used only as indicated in nVent's product instruction sheets and training materials. Instruction sheets are available at www.nvent.com and from your nVent customer service representative. Improper installation, misuse, misapplication or other failure to completely follow nVent's instructions and warnings may cause product malfunction, property damage, serious bodily injury and death and/or void your warranty.



Our powerful portfolio of brands:

CADDY ERICO HOFFMAN ILSCO SCHROFF TRACHTE