

# C2SW Side Weldable Half-Coupler, Offset Flat



## FEATURES

Designed for connecting reinforcing bar parallel to structural steel sections or plates

Machined from weldable grades of steel

## SPECIFICATIONS

**Finish:** Plain

**Material:** Steel

Table 1/2

Catalog Number	Rebar Size, Metric	Rebar Size, US	Rebar Size, Canada	Diameter (Ø)	Length (L)	Height 1 (H1)
EL16C2SWN	16 mm	#5	15M	28 mm	61mm	24mm
EL20C2SWN	20 mm	#6	20M	33 mm	87mm	29mm
EL25C2SWN	25 mm	#8	25M	43 mm	97mm	37mm
EL32C2SWN	32 mm	#10		65 mm	100mm	53mm
EL40C2SWN	40 mm			70 mm	110mm	60mm
EL50TC2SWN	50 mm			90 mm	120mm	77mm

Table 2/2

Catalog Number	Height 2 (H2)	Bar Depth (BD)	Unit Weight	Package Quantity
EL16C2SWN	13mm	22mm	0.21 kg	80
EL20C2SWN	15mm	28mm	0.43 kg	40

Catalog Number	Height 2 (H2)	Bar Depth (BD)	Unit Weight	Package Quantity
EL25C2SWN	20mm	34mm	0.84 kg	20
EL32C2SWN	25mm	40mm	1.95 kg	10
EL40C2SWN	30mm	55mm	2.47 kg	8
EL50TC2SWN	40mm	71mm	4.22 kg	4

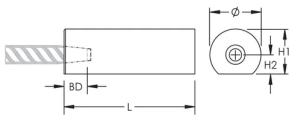
**Designed to Meet:** AASHTO;ABNT NBR 8548:1984;ACI 318 Type 1 (125% Specified Yield);ACI 318 Type 2 (Specified Tensile);ACI 349;ACI 359;AS3600

## ADDITIONAL PRODUCT DETAILS

Bar dimensions and weights listed may vary by region. Coupler sizes not shown may be available by special order. Contact your nVent LENTON representative for more information.

The design of the weld, the selection of electrode, and other relevant choices depend on the chemical and physical properties of the structural steel to which the couplers are welded. Engineers who design assemblies should adhere to all appropriate regulations.

## DIAGRAMS



## WARNING

nVent products shall be installed and used only as indicated in nVent's product instruction sheets and training materials. Instruction sheets are available at [www.nvent.com](http://www.nvent.com) and from your nVent customer service representative. Improper installation, misuse, misapplication or other failure to completely follow nVent's instructions and warnings may cause product malfunction, property damage, serious bodily injury and death and/or void your warranty.

**North America**

+1.800.753.9221

Option 1 – Customer Care

Option 2 – Technical

Support

**Europe**

Netherlands:

+31 800-0200135

France:

+33 800 901 793

**Europe**

Germany:

800 1890272

Other Countries:

+31 13 5835404

**APAC**

Shanghai:

+ 86 21 2412 1618/19

Sydney:

+61 2 9751 8500



Our powerful portfolio of brands:

**CADDY**

**ERICO**

**HOFFMAN**

**ILSCO**

**SCHROFF**

**TRACHTE**