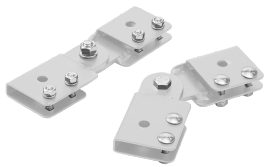


# Adjustable Butt-Splice Kit (cULus), White, Steel

## Data Solutions

### CATALOG NUMBER

### LABSKW



The Cable Runway Adjustable Butt-Splice Kit provides a change in up-and-down direction of the cable runway. It can be adjusted to any angle from 0 to 90 degrees. Each kit connects one ladder rack section to another. It includes mounting hardware as well.

### FEATURES

The Cable Runway Adjustable Butt-Splice Kit provides a change in up-and-down direction of the cable runway

It can be adjusted to any angle from 0 to 90 degrees

Each kit connects one ladder rack section to another

It includes mounting hardware as well

### PRODUCT ATTRIBUTES

Article Number: 29936

Material: Mild Steel

Finish: Powder Coated

Color: White

Thickness: 1.9mm

### WARNING

nVent products shall be installed and used only as indicated in nVent's product instruction sheets and training materials. Instruction sheets are available at [www.nvent.com](http://www.nvent.com) and from your nVent customer service representative. Improper installation, misuse, misapplication or other failure to completely follow nVent's instructions and warnings may cause product malfunction, property damage, serious bodily injury and death and/or void your warranty.



Our powerful portfolio of brands:

**CADDY   ERICO   HOFFMAN   ILSCO   SCHROFF   TRACHTE**