

# DB Earthpoint, One Stud



Grounding and bonding are an integral part of any modern electrical protection system design. An effective ground system is a key element of this. An equipotential bond between all current-carrying elements in a structure and earth is required for personnel safety in case of catenary failure, for instance.

A cathodic protection system also prevents corrosion damage to steelwork and reduces expensive maintenance.

It is crucial to help provide personnel safety, as well as reliable protection for vital equipment, and in some cases, to minimize interruptions of service and costly downtime. With over a century of experience in the design and manufacturing of bonding and grounding solutions, ERICO offers a quality system to assist you with your needs.

## FEATURES

Preferential bonding earthpoint

Enables production of the earthbridge using nVent ERICO Cadweld Exothermic connections to attach to a round solid, round stranded, or flat conductor made of copper or steel

Nuts and bolts are supplied unassembled

A plastic cap is installed on the threaded hole to protect against concrete intrusion

## SPECIFICATIONS

**Material:** Copper

Table 1/1

Catalog Number	Article Number	Height (H)	Diameter 1 (Ø1)	Diameter 2 (Ø2)	Thread Size (TS)
DB16A	166180	55 mm	16 mm	50 mm	M16
DB10A	166120	55 mm	16 mm	50 mm	M10
DB12ABLK		55 mm	16 mm	50 mm	M12
DB12A	166150	55 mm	16 mm	50 mm	M12
DB16ABLK		55 mm	16 mm	50 mm	M16
DB10ABLK		55 mm	16 mm	50 mm	M10

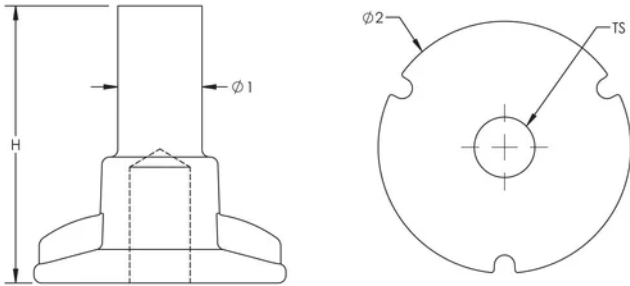
## ADDITIONAL PRODUCT DETAILS

---

Assemblies require conductors and nVent ERICO Cadweld connections, which must be ordered separately.

## DIAGRAMS

---



## WARNING

---

nVent products shall be installed and used only as indicated in nVent's product instruction sheets and training materials. Instruction sheets are available at [www.nvent.com](http://www.nvent.com) and from your nVent customer service representative. Improper installation, misuse, misapplication or other failure to completely follow nVent's instructions and warnings may cause product malfunction, property damage, serious bodily injury and death and/or void your warranty.

**⚠** WARNING: This product can expose you to chemicals including lead, which is known to the State of California to cause cancer and birth defects or other reproductive harm. For more information go to [www.P65Warnings.ca.gov](http://www.P65Warnings.ca.gov).

### North America

+1.800.753.9221  
Option 1 – Customer Care  
Option 2 – Technical  
Support

### Europe

Netherlands:  
+31 800-0200135  
France:  
+33 800 901 793

### Europe

Germany:  
800 1890272  
Other Countries:  
+31 13 5835404

### APAC

Shanghai:  
+ 86 21 2412 1618/19  
Sydney:  
+61 2 9751 8500



Our powerful portfolio of brands:

**CADDY ERICO HOFFMAN ILSCO SCHROFF TRACHTE**