

# Washer



## FEATURES

Use under the head of a bolt or nut in order to distribute the fastener load over a wider surface area

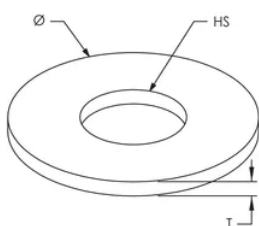
## SPECIFICATIONS

**Material:** Stainless Steel 18-8 (EN 1.4305)

Table 1/1

Catalog Number	Hole Size (HS)	Diameter (Ø)	Thickness (T)
A929A099	11.01 mm	5.4 mm	1.59 mm
A929A095	7.14 mm	18.54 mm	1.59 mm
A929A097	8.74 mm	2.23 mm	1.59 mm
A929A101	13.49 mm	31.75 mm	2.54 mm
A929A105	20.62 mm	50.8 mm	2.54 mm
A929A103	16.66 mm	44.45 mm	2.54 mm

## DIAGRAMS



## WARNING

---

nVent products shall be installed and used only as indicated in nVent's product instruction sheets and training materials. Instruction sheets are available at [www.nvent.com](http://www.nvent.com) and from your nVent customer service representative. Improper installation, misuse, misapplication or other failure to completely follow nVent's instructions and warnings may cause product malfunction, property damage, serious bodily injury and death and/or void your warranty.

### North America

+1.800.753.9221

Option 1 – Customer Care

Option 2 – Technical

Support

### Europe

Netherlands:

+31 800-0200135

France:

+33 800 901 793

### Europe

Germany:

800 1890272

Other Countries:

+31 13 5835404

### APAC

Shanghai:

+ 86 21 2412 1618/19

Sydney:

+61 2 9751 8500



Our powerful portfolio of brands:

**CADDY**

**ERICO**

**HOFFMAN**

**ILSCO**

**SCHROFF**

**TRACHTE**