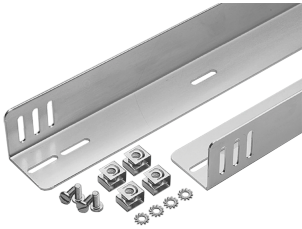


Chassis Guides



Guides mount between two pairs of rack-mounting angles that have accessory mounting legs. Guides and mounting hardware are plated. (XSFG mount on one pair of Type RA rack-mounting angles that have accessory mounting legs.)

FEATURES

Guides mount between two pairs of rack angles, with slotted holes provided for vertical or lateral adjustment

Furnished in pairs, with mounting hardware supplied

XSFG mount on one pair of Type RA rack-mounting angles that have accessory mounting legs

SPECIFICATIONS

Table 1/1

| Catalog Number | Article Number | Material | Finish | Thickness | Rack Units | Length |
|----------------|----------------|------------|--------|-----------|------------|---------|
| AG1U5 | 12430 | Mild Steel | Plated | 1.9mm | 1U | 381mm |
| AG1U6 | 12410 | Mild Steel | Plated | 1.9mm | 1U | 533.4mm |
| AG1U8 | 12420 | Mild Steel | Plated | 1.9mm | 1U | 660.4mm |

ADDITIONAL PRODUCT DETAILS

One rack unit = 1.75 in. (45 mm)

Use with A72H3124FS. Requires two sets of U-Style (type RA) rack-mount angles for installation.

WARNING

nVent products shall be installed and used only as indicated in nVent's product instruction sheets and training materials. Instruction sheets are available at www.nvent.com and from your nVent customer service representative. Improper installation, misuse, misapplication or other failure to completely follow nVent's instructions and warnings may cause product malfunction, property damage, serious bodily injury and death and/or void your warranty.



Our powerful portfolio of brands:

CADDY ERICO HOFFMAN ILSCO SCHROFF TRACHTE