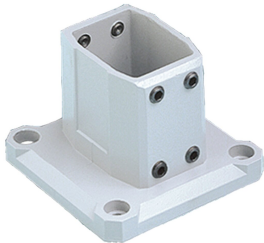


Compact Series 2 Base Bracket/Wall Flange



Compact Series 2 base bracket/wall flange allows for fixed positioning on a horizontal or vertical surface when rotation is not needed.

FEATURES

Set screws and gasket are included

Surface mounting fasteners are not provided

Assembled Compact Series 2 HMI Arm System has a max weight load of 101 lb. (45.8 kg)

SPECIFICATIONS

Table 1/1

| Catalog Number | Article Number | Height | Width | Material | Finish | Color |
|----------------|----------------|--------|-------|----------|---------------|------------|
| CCS2WFBLG | 41869 | 45mm | 60mm | Aluminum | Powder Coated | Light Gray |

WARNING

nVent products shall be installed and used only as indicated in nVent's product instruction sheets and training materials. Instruction sheets are available at www.nvent.com and from your nVent customer service representative. Improper installation, misuse, misapplication or other failure to completely follow nVent's instructions and warnings may cause product malfunction, property damage, serious bodily injury and death and/or void your warranty.



Our powerful portfolio of brands:

CADDY ERICO HOFFMAN ILSCO SCHROFF TRACHTE