

Adjustable I-Beam Adapter



This code-compliant Structural Attachment is part of the nVent CADDY line of innovative rigid bracing system, designed to provide superior performance and meet the highest seismic load requirements. Its innovative design allows quick and easy installation onto a wide range of steel I-Beams. It is ready to use out of the box, eliminating the need for pre-assembly or loose hardware and its snap-off bolts make inspection of seismic sway braces simple.

CERTIFICATIONS



FEATURES

No loose parts

No assembly required

Snap-off bolt head helps enable easy installation and inspection of seismic sway braces

Meets NFPA®-13 requirements for seismic sway bracing

FM® Specification Tested

SPECIFICATIONS

Finish: Electrogalvanized

Material: Steel

Table 1/1

Catalog Number	Flange Thickness (FT)	A	Rod Size 1 (RS1)	Rod Size 2 (RS2)	Height (H)	Width (W)
CSBS3N	6 - 19 mm	100 - 215 mm	3/8"	1/2"	67 mm	92 mm
CSBS4N	6 - 19 mm	100 - 365 mm	3/8"	1/2"	67 mm	92 mm
CSBS5N	19 - 31 mm	100 - 455 mm	3/8"	1/2"	79 mm	92 mm

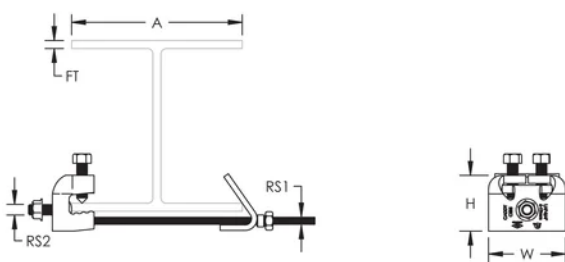
ADDITIONAL PRODUCT DETAILS

Structure Attachment and Brace Member are not included.

UL Loads				
Part Number	Structure Attachment Fitting	Flange Thickness	Brace Member	Load Rating
CSBS3xxx	CSBU1xxx	6 - 8 mm	DN25 - DN50 Sch. 40 NPS	6672 N
		8 - 19 mm		7561 N
	CSBURC12	6 - 19 mm	CSB12CBL	1859 N
			CSB18CBL	3434 N
			CSB36CBL	4893 N
	CSBS4xxx	CSBU1xxx	6 - 8 mm	DN25 - DN50 Sch. 40 NPS
8 - 19 mm			7561 N	
CSBURC12		6 - 19 mm	CSB12CBL	1859 N
			CSB18CBL	3434 N
			CSB36CBL	4893 N
CSBS5xxx		CSBU1xxx	6 - 19 mm	DN25 - DN50 Sch. 40 NPS
	CSBURC12			
		CSB18CBL	3434 N	
		CSB36CBL	4893 N	

FM Loads								
Part Number	Horizontal Capacity per Installation Angle from Vertical							
	Perpendicular to Structure				Parallel to Structure			
	30° - 44°	45° - 59°	60° - 74°	75° - 90°	30° - 44°	45° - 59°	60° - 74°	75° - 90°
CSBS3xxx	5240 N	9830 N	12580 N	13070 N	3640 N	6130 N	9250 N	13380 N
CSBS4xxx	5240 N	9830 N	12580 N	13070 N	3640 N	6130 N	9250 N	13380 N
CSBS5xxx	5420 N	9510 N	11470 N	12760 N	4890 N	8090 N	9740 N	11920 N

DIAGRAMS



WARNING

nVent products shall be installed and used only as indicated in nVent's product instruction sheets and training materials. Instruction sheets are available at www.nvent.com and from your nVent customer service representative. Improper installation, misuse, misapplication or other failure to completely follow nVent's instructions and warnings may cause product malfunction, property damage, serious bodily injury and death and/or void your warranty.

North America

+1.800.753.9221

Option 1 – Customer Care

Option 2 – Technical

Support

Europe

Netherlands:

+31 800-0200135

France:

+33 800 901 793

Europe

Germany:

800 1890272

Other Countries:

+31 13 5835404

APAC

Shanghai:

+ 86 21 2412 1618/19

Sydney:

+61 2 9751 8500



Our powerful portfolio of brands:

CADDY ERICO HOFFMAN ILSCO SCHROFF TRACHTE

