

ECN Nut for C-Channel E2/E2L/E3



FEATURES

Channel nut for C-Profiles

SPECIFICATIONS

Finish: Electrogalvanized

Material: Steel

Table 1/1

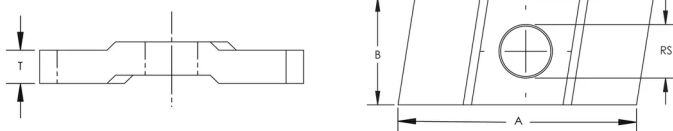
Catalog Number	Article Number	Channel Type	Rod Size (RS)	Thickness (T)	A	B
E23CNM6	585250	E2, E2L, E3	6	5 mm	29 mm	13 mm
E23CNM8	585260	E2, E2L, E3	8	5 mm	29 mm	13 mm
E23CNM10	585270	E2, E2L, E3	10	5 mm	29 mm	13 mm

ADDITIONAL PRODUCT DETAILS

Sliding force F2 is limited to 600 N for all types of Nuts and T-Bolts for C-channel System.

Nuts and T-Bolts for C-channel System	
C-Channel Type	Pullout Force F1
E2	1200 N
E2L	1200 N
E3	1700 N

DIAGRAMS



WARNING

nVent products shall be installed and used only as indicated in nVent's product instruction sheets and training materials. Instruction sheets are available at www.nvent.com and from your nVent customer service representative. Improper installation, misuse, misapplication or other failure to completely follow nVent's instructions and warnings may cause product malfunction, property damage, serious bodily injury and death and/or void your warranty.

North America

+1.800.753.9221

Option 1 – Customer Care

Option 2 – Technical

Support

Europe

Netherlands:

+31 800-0200135

France:

+33 800 901 793

Europe

Germany:

800 1890272

Other Countries:

+31 13 5835404

APAC

Shanghai:

+ 86 21 2412 1618/19

Sydney:

+61 2 9751 8500



Our powerful portfolio of brands:

CADDY

ERICO

HOFFMAN

ILSCO

SCHROFF

TRACHTE

