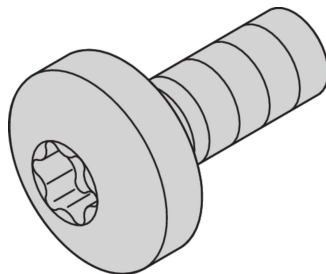
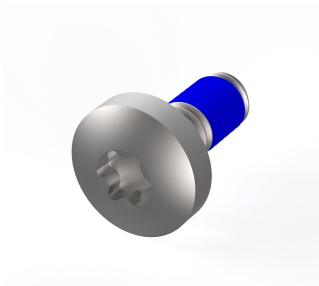


# Assembly Parts for Rugged Components, Panhead Screw with Thread-locking Compound, Torx, M4 x 10

## CATALOG NUMBER

**24566-103**



Assembly parts with thread-locking compound for rugged Side Panel, horizontal rail, cover plates, rear angle.

## CERTIFICATIONS



## FEATURES

Screws for the following fixings: Rugged side panel - horizontal rail, Rugged side panel - cover plate, Rugged side panel - rear angle

## PRODUCT ATTRIBUTES

Type: Panhead Screw

Length: 10mm

Package Quantity: 100

Thread Size: M4

Material: Stainless Steel

Product Family: EuropacPRO

Product Type: Assembly Kit

Works With: Subracks

Net Weight: 0.19kg

## WARNING

nVent products shall be installed and used only as indicated in nVent's product instruction sheets and training materials. Instruction sheets are available at [www.nvent.com](http://www.nvent.com) and from your nVent customer service representative. Improper installation, misuse, misapplication or other failure to completely follow nVent's instructions and warnings may cause product malfunction, property damage, serious bodily injury and death and/or void your warranty.

### North America

All locations  
+1.763.422.2661  
Chat with us:  
[nvent.com/schroff](http://nvent.com/schroff)

### Europe

Straubenhardt, Germany  
+49.7082.794.0  
Betschdorf, France  
+33.3.88.90.64.90  
Warsaw, Poland  
+48.22.209.98.35  
Assago, Italy  
+39.02.932.7141  
Chat with us:  
[nvent.com/schroff](http://nvent.com/schroff)

### Asia

Shanghai, China  
+86.21.2412.6943  
Qingdao, China  
+86.532.8771.6101  
Singapore  
+65.6768.5800  
Shin-Yokohama, Japan  
+81.45.476.0271  
Chat with us:  
[nvent.com/schroff](http://nvent.com/schroff)

### Middle East & India

Dubai, United Arab  
Emirates  
+971.4.378.1700  
Bangalore, India  
+91.80.6715.2001  
Istanbul, Turkey  
+90.216.250.7374  
Chat with us:  
[nvent.com/schroff](http://nvent.com/schroff)



Our powerful portfolio of brands:

**CADDY ERICO HOFFMAN ILSCO SCHROFF TRACHTE**