

# 1 Hole Offset Lug

## Data Solutions



### FEATURES

Provides an efficient bolting surface for grounding and power applications

Electrolytic grade copper

For use with nVent ERICO Cadweld type LA connections only

### SPECIFICATIONS

**Material:** Copper

**Finish:** Tinned

Table 1/2

Catalog Number	Type	Height (H)	Length (L)	Width (W)	Thickness (T)	A
B101CEOL	NEMA®	15.88mm	63.5mm	25.4mm	3.18mm	12.7mm
B305TC	Non-NEMA®	20mm	91.4mm	30mm	5mm	15mm

Table 2/2

Catalog Number	B	C	Hole Size (HS)	Angle (a)	Equivalent Conductor Size
B101CEOL	25.4mm	22.23mm	11.11mm	45°	80.63mm <sup>2</sup>
B305TC	33.78mm	39.88mm	17mm	45°	152.23mm <sup>2</sup>

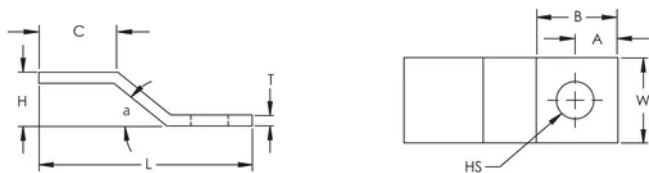
## ADDITIONAL PRODUCT DETAILS

---

For sizes not listed, contact us.

## DIAGRAMS

---



## WARNING

---

nVent products shall be installed and used only as indicated in nVent's product instruction sheets and training materials. Instruction sheets are available at [www.nvent.com](http://www.nvent.com) and from your nVent customer service representative. Improper installation, misuse, misapplication or other failure to completely follow nVent's instructions and warnings may cause product malfunction, property damage, serious bodily injury and death and/or void your warranty.



Our powerful portfolio of brands:

**CADDY ERICO HOFFMAN ILSCO SCHROFF TRACHTE**