

# B162 Earthpoint, Two Stud



## FEATURES

Long-lasting design

Low ground resistance and impedance

Superior electrical conductivity and resistance to corrosion

Electrically and mechanically robust and reliable

Easy to install as a Prefabricated Earthbridge once nVent ERICO Cadweld welded to a piece of conductor

## SPECIFICATIONS

Table 1/2

Catalog Number	Article Number	Material	Width 1 (W1)	Width 2 (W2)	Depth (D)	Height (H)
B16212A	166210	Copper	44.5 mm	85 mm	45mm	76.2 mm
B1622Q		Brass	44.45 mm	82.55 mm	41.28mm	76.2 mm

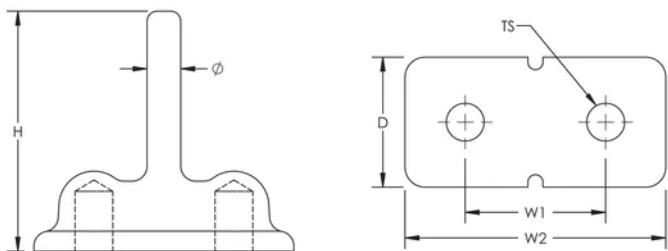
Table 2/2

Catalog Number	Article Number	Diameter (Ø)	Thread Size (TS)
B16212A	166210	10.7 mm	M12
B1622Q		13.46 mm	1/2" UNC

## ADDITIONAL PRODUCT DETAILS

Assemblies require conductors and nVent ERICO Cadweld connections, which must be ordered separately.

## DIAGRAMS



## WARNING

nVent products shall be installed and used only as indicated in nVent's product instruction sheets and training materials. Instruction sheets are available at [www.nvent.com](http://www.nvent.com) and from your nVent customer service representative. Improper installation, misuse, misapplication or other failure to completely follow nVent's instructions and warnings may cause product malfunction, property damage, serious bodily injury and death and/or void your warranty.

**⚠** WARNING: This product can expose you to chemicals including lead, which is known to the State of California to cause cancer and birth defects or other reproductive harm. For more information go to [www.P65Warnings.ca.gov](http://www.P65Warnings.ca.gov).

### North America

+1.800.753.9221

Option 1 – Customer Care

Option 2 – Technical

Support

### Europe

Netherlands:

+31 800-0200135

France:

+33 800 901 793

### Europe

Germany:

800 1890272

Other Countries:

+31 13 5835404

### APAC

Shanghai:

+ 86 21 2412 1618/19

Sydney:

+61 2 9751 8500



Our powerful portfolio of brands:

**CADDY**

**ERICO**

**HOFFMAN**

**ILSCO**

**SCHROFF**

**TRACHTE**