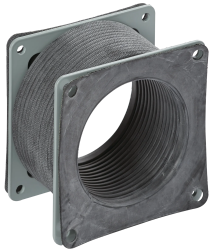


# Flexible Fitting Feed-Through



Feed-Through Flexible Fittings are used for isolating a wireway run from shock and vibration or compensating for misalignment. Used where an odd angle is required (but not to exceed 90 degrees). Permits movement of a machine or control station connected to a wireway run. Hypalon bellow with steel flanges. Connects to other wireway sections and fittings and protects wires and cables against dust in a broad range of industrial applications.

## FEATURES

---

Feed-Through Flexible Fittings are used for isolating a wireway run from shock and vibration or compensating for misalignment

Used where an odd angle is required (but not to exceed 90 degrees)

Permits movement of a machine or control station connected to a wireway run

Hypalon bellow with steel flanges

Connects to other wireway sections and fittings and protects wires and cables against dust in a broad range of industrial applications

## SPECIFICATIONS

---

**Material:** Hypalon Rubber Bellow

Table 1/1

Catalog Number	Article Number	Type	Height	Width
F22WFF	15780	Flexible Fitting	64mm	64mm
F44WFF	15790	Flexible Fitting	102mm	102mm
F66WFF	15800	Flexible Fitting	152mm	152mm
F88WFF	15810	Flexible Fitting	203mm	203mm

## ADDITIONAL PRODUCT DETAILS

---

All dimensions are to outside surfaces. Allow .12 in. (3 mm) additional for gasket at joints.

## WARNING

---

nVent products shall be installed and used only as indicated in nVent's product instruction sheets and training materials. Instruction sheets are available at [www.nvent.com](http://www.nvent.com) and from your nVent customer service representative. Improper installation, misuse, misapplication or other failure to completely follow nVent's instructions and warnings may cause product malfunction, property damage, serious bodily injury and death and/or void your warranty.



Our powerful portfolio of brands:

**CADDY ERICO HOFFMAN ILSCO SCHROFF TRACHTE**