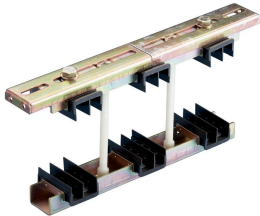


Universal Busbar Support



CERTIFICATIONS



FEATURES

Universal fixing system

Installs quickly and easily

Extremely robust construction

Adjustable arms for easy mounting

Halogen free insulators

SPECIFICATIONS

| | |
|---------------------------------------|---|
| Max Working Voltage, IEC (Ui): | 1000;1500 |
| Working Temperature: | -40 to 130 °C |
| Material: | Steel;Glass Fibre Reinforced Polyamide |
| Complies With: | IEC® 60439.1;IEC® 61439.1;IEC® 60695-2-11 (Glow Wire Test 960 °C) |
| Flammability Rating: | UL® 94V-0 |

Table 1/2

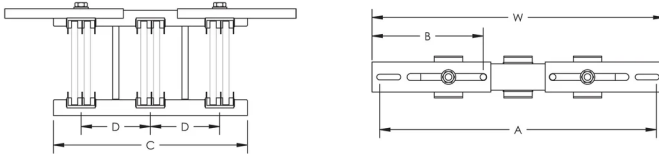
| Catalog Number | Article Number | Typical Application Current Rating | Busbars per Phase | Busbar Width | Busbar Thickness | Width (W) |
|----------------|----------------|------------------------------------|-------------------|--------------|------------------|-----------|
|----------------|----------------|------------------------------------|-------------------|--------------|------------------|-----------|

| | | | | | | |
|----------|--------|--------|-------|-------------|-------|--------------|
| UBS4-5T | 551020 | 3500 A | 1 - 4 | 30 - 125 mm | 5 mm | 375 - 575 mm |
| UBS2-10T | 551080 | 3600 A | 1 - 2 | 30 - 120 mm | 10 mm | 375 - 575 mm |

Table 2/2

| Catalog Number | Article Number | A | B | C | D |
|----------------|----------------|--------------|--------|--------|--------|
| UBS4-5T | 551020 | 350 - 550 mm | 176 mm | 307 mm | 110 mm |
| UBS2-10T | 551080 | 350 - 550 mm | 176 mm | 307 mm | 110 mm |

DIAGRAMS



WARNING

nVent products shall be installed and used only as indicated in nVent's product instruction sheets and training materials. Instruction sheets are available at www.nvent.com and from your nVent customer service representative. Improper installation, misuse, misapplication or other failure to completely follow nVent's instructions and warnings may cause product malfunction, property damage, serious bodily injury and death and/or void your warranty.

North America

+1.800.753.9221
Option 1 – Customer Care
Option 2 – Technical
Support

Europe

Netherlands:
+31 800-0200135
France:
+33 800 901 793

Europe

Germany:
800 1890272
Other Countries:
+31 13 5835404

APAC

Shanghai:
+ 86 21 2412 1618/19
Sydney:
+61 2 9751 8500



Our powerful portfolio of brands:

CADDY ERICO HOFFMAN ILSCO SCHROFF TRACHTE