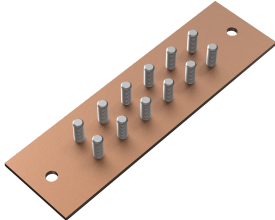


## ComLine Ground Buss



The Ground Buss is a copper bar that features wiring tie points within the cabinet, providing a central grounding point. It mounts on studs provided on the cabinet side. Tie-point spacing is 3/4-in. pair-to-pair and 5/8-in. across each pair. The ground studs are 1/4-20 x .75-in. on 3/4-in. centers.

### FEATURES

---

The Ground Buss is a copper bar that features wiring tie points within the cabinet, providing a central grounding point

It mounts on studs provided on the cabinet side

Tie-point spacing is 3/4-in. pair-to-pair and 5/8-in. across each pair

The ground studs are 1/4-20 x .75-in. on 3/4-in. centers

## SPECIFICATIONS

Table 1/1

Catalog Number	Article Number	Material	Finish	Thickness
EGBB1	17123	Copper	Brushed	3mm
EGBB2	17124	Copper	Brushed	3mm

## WARNING

nVent products shall be installed and used only as indicated in nVent's product instruction sheets and training materials. Instruction sheets are available at [www.nvent.com](http://www.nvent.com) and from your nVent customer service representative. Improper installation, misuse, misapplication or other failure to completely follow nVent's instructions and warnings may cause product malfunction, property damage, serious bodily injury and death and/or void your warranty.



Our powerful portfolio of brands:

**CADDY ERICO HOFFMAN ILSCO SCHROFF TRACHTE**