

47 Eye Nut



FEATURES

Attachment for various types of pipe supports and structural attachments

Conforms with Federal Specification WW-H-171 (Type 16), Manufacturers Standardization Society MSS-SP-58 (Type 16)

SPECIFICATIONS

Finish: Plain

Material: Steel

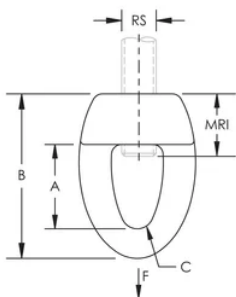
Table 1/1

Catalog Number	Rod Size (RS)	A	B	C	MRI	Static Load (F)
0470025PL	1/4"	11/16"	1 3/4"	5/16"	1/2"	230lbf
0470037PL	3/8"	13/16"	1 5/8"	3/8"	5/8"	600lbf
0470050PL	1/2"	13/16"	1 7/8"	3/8"	3/4"	1130lbf

ADDITIONAL PRODUCT DETAILS

Install in accordance with applicable code.

DIAGRAMS



WARNING

nVent products shall be installed and used only as indicated in nVent's product instruction sheets and training materials. Instruction sheets are available at www.nvent.com and from your nVent customer service representative. Improper installation, misuse, misapplication or other failure to completely follow nVent's instructions and warnings may cause product malfunction, property damage, serious bodily injury and death and/or void your warranty.

North America

+1.800.753.9221

Option 1 – Customer Care

Option 2 – Technical

Support

Europe

Netherlands:

+31 800-0200135

France:

+33 800 901 793

Europe

Germany:

800 1890272

Other Countries:

+31 13 5835404

APAC

Shanghai:

+ 86 21 2412 1618/19

Sydney:

+61 2 9751 8500



Our powerful portfolio of brands:

CADDY

ERICO

HOFFMAN

ILSCO

SCHROFF

TRACHTE

