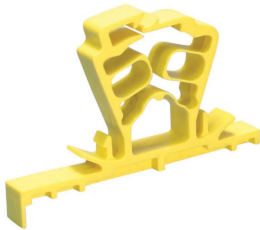


# Cable Gripper



## CERTIFICATIONS



## FEATURES

Attaches to existing holes in metal studs without tools or with Metal Stud Punch (MSP20)

Delivers compliance with NEC® 300.4(d), CEC 12-510 and CEC 12-516

Installs easily to metal and wood studs

Provides secure installation of multiple cables with unique locking/ unlocking system

Staples, nails or screws to wood stud

Supports four NMC or eight 4-pair UTP, Category 5 and higher (electrical and datacomm cannot be combined)

## SPECIFICATIONS

Table 1/1

Catalog Number	Material	Finish	Color
CG4	Polypropylene	Plain	Yellow

## WARNING

nVent products shall be installed and used only as indicated in nVent's product instruction sheets and training materials. Instruction sheets are available at [www.nvent.com](http://www.nvent.com) and from your nVent customer service representative. Improper installation, misuse, misapplication or other failure to completely follow nVent's instructions and warnings may cause

product malfunction, property damage, serious bodily injury and death and/or void your warranty.

**North America**

+1.800.753.9221

Option 1 – Customer Care

Option 2 – Technical

Support

**Europe**

Netherlands:

+31 800-0200135

France:

+33 800 901 793

**Europe**

Germany:

800 1890272

Other Countries:

+31 13 5835404

**APAC**

Shanghai:

+ 86 21 2412 1618/19

Sydney:

+61 2 9751 8500



Our powerful portfolio of brands:

**CADDY ERICO HOFFMAN ILSCO SCHROFF TRACHTE**

