

Two Hole Pipe Strap



CERTIFICATIONS



FEATURES

Light duty support of pipe

Attaches directly to the face of a horizontal or vertical structural member

Conforms with Federal Specification WW-H-171 (Type 26), Manufacturers Standardization Society (MSS) SP-58 (Type 26)

SPECIFICATIONS

Finish: Electrogalvanized

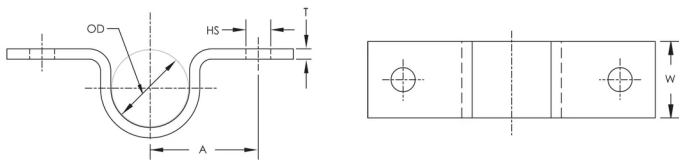
Material: Steel

Table 1/1

Catalog Number	Pipe Size	Outer Diameter (OD)	Hole Size (HS)	Width (W)	Thickness (T)	A
0080400EG	4"	4 1/2"	1/4"	1 1/4"	18ga	3 1/2"
0080125EG	1 1/4" Min	1.66"	1/4"	7/8"	18ga	1 1/2"

Catalog Number	Pipe Size	Outer Diameter (OD)	Hole Size (HS)	Width (W)	Thickness (T)	A
0080050EG	1/2"	0.84"	1/4"	5/8"	22ga	1 1/8"
0080100EG	1"	1.31"	1/4"	3/4"	20ga	1 3/8"
0080150EG	1 1/2"	1.9"	1/4"	1 1/4"	16ga	1 5/8"
0080200EG	2" Min	2 3/8"	1/4"	1 1/4"	16ga	1 7/8"
0080250EG	2 1/2"	2 7/8"	1/4"	1 1/4"	16ga	2 1/8"
0080075EG	3/4"	1.05"	1/4"	3/4"	20ga	1 1/4"
0080300EG	3"	3 1/2"	1/4"	1 1/4"	15ga	3 3/16"

DIAGRAMS



WARNING

nVent products shall be installed and used only as indicated in nVent's product instruction sheets and training materials. Instruction sheets are available at www.nvent.com and from your nVent customer service representative. Improper installation, misuse, misapplication or other failure to completely follow nVent's instructions and warnings may cause product malfunction, property damage, serious bodily injury and death and/or void your warranty.

North America

+1.800.753.9221

Option 1 – Customer Care

Option 2 – Technical

Support

Europe

Netherlands:

+31 800-0200135

France:

+33 800 901 793

Europe

Germany:

800 1890272

Other Countries:

+31 13 5835404

APAC

Shanghai:

+ 86 21 2412 1618/19

Sydney:

+61 2 9751 8500



Our powerful portfolio of brands:

CADDY ERICO HOFFMAN ILSCO SCHROFF TRACHTE

